

ARCHITECTURE · INTERIOR DESIGN · LANDSCAPING · M.E.P. SYSTEMS

November / December 2019

SEAB

SOUTHEAST ASIA BUILDING

SEAB
45
YEARS IN ARCHITECTURE
1974 - 2019

Chongqing Zhongshuge Bookstore

Chongqing, China

ARCHITECTURE + INTERIOR Retail

SPECIAL FEATURE Architectural Glass

ARCHITECT'S CORNER Interview with Anna Mae Lamentillo, Chairperson of the Build Build

Build Committee of the Department of Public Works and Highways (DPWH) in the Philippines

ISSN 2345-7066



9 772345 706008

Schüco solutions allow architects and developers
maximum design flexibility
and transparency



Attractive, non-insulated sliding system with panoramic design – can be used flexibly in warm climate zones and internally. The Schüco Sliding System ASS 39 PD.NI impresses with its clear design thanks to concealed operation in the interlocking section or by means of an elegant, continuous pull grip.

www.schueco.com | sea@schueco.com

Windows. Doors. Façades.

SCHÜCO

Innovative
products
make innovative
projects.



Multiple Panel

Ventilated Façades

www.hunterdouglas.asia

100
1919-2019

HunterDouglas 
Architectural

CONTENTS

nov-dec 2019

Features

ARCHITECTURE + INTERIOR – Retail

- 44 CityLife Shopping District – A project by Mapei
- 48 Chongqing Zhongshuge Bookstore
- 52 Yorkville – The Ring
- 56 Yoho Mall Chow Tai Fook Experience Shop
- 60 Sounds Hannam Aesop Signature Store
- 64 JHW Store

ARCHITECT'S CORNER – Interview

- 68 An interview with Anna Mae Lamentillo, Chairperson of the Build Build Build Committee of the Department of Public Works and Highways (DPWH) in the Philippines

SPECIAL FEATURE – Architectural Glass

- 71 Chongqing Gaoke Group Ltd Office Project
- 74 Chambre de Métiers et de l'Artisanat (CMA) Hauts-De-France
- 78 The Edge

Regulars

NEWS

- 6 News from Asia Pacific, Middle East & World

MECHANICAL, ELECTRICAL & PLUMBING SYSTEMS

- 82 Mechanical: HVAC [Danfoss]
- 85 Electrical: Building Automation [Tridium]

EVENTS CALENDAR

- 43 Guide to international trade shows, expos & fairs



On the Cover: Chongqing Zhongshuge Bookstore in Chongqing, Southwest China, designed by X+Living. Photo: © Shao Feng

Cover design by Fawzeeah Yamin

PUBLISHER

Steven Ooi (steven.ooi@tradelinkmedia.com.sg)

ASSOCIATE PUBLISHER

Eric Ooi (eric.ooi@tradelinkmedia.com.sg)

EDITOR

Amita Natverlal (seab@tradelinkmedia.com.sg)

MARKETING MANAGER

Felix Ooi (felix.ooi@tradelinkmedia.com.sg)

MARKETING EXECUTIVE

Winky Cheah (winky.cheah@tradelinkmedia.com.sg)

HEAD OF GRAPHIC DEPT/ADVERTISEMENT

CO-ORDINATOR

Fawzeeah Yamin (fawzeeah@tradelinkmedia.com.sg)

GRAPHIC DESIGNER

Siti Nur Aishah (siti@tradelinkmedia.com.sg)

CIRCULATION

Yvonne Ooi (yvonne.ooi@tradelinkmedia.com.sg)

Disclaimer

All advertisers and contributors must ensure all promotional material and editorial information submitted for all our publications, must be free from any infringement on patent rights and copyrights laws in every jurisdiction. Failure of which, they must be fully liable and accountable for all legal consequences (if any) that may arise.

The Editor reserves the right to omit, amend or alter any press release submitted for publication. The publisher and the editor are unable to accept any liability for errors or omissions that may occur, although every effort has been taken to ensure that all information is correct at the time of going to press. No portion of this publication may be reproduced in whole or part without the written permission of the publisher.

The editorial contents contributed by consultant editor, editor, interviewee and other contributors for this publication, do not, in any way, represent the views of or endorsed by the Publisher or the Management of Trade Link Media Pte Ltd. Thus, the Publisher or Management of Trade Link Media will not be accountable for any legal implications to any party or organisation.

Southeast Asia Building is available free-of-charge to applicants in the building industry who meet the publication's terms of control. For applicants who do not qualify for free subscription, copies will be made available, subject to acceptance by the publisher, for a subscription fee, which varies according to the country of residence in the following manner:

Annual Subscription

Airmail: America/Europe – S\$170, Japan, Australia, New Zealand – S\$170, Asia – S\$140, Brunei – S\$90, Malaysia – S\$90
Surface mail: Singapore – S\$45
(Incl 7% GST Reg No.: M2-0108708-2)

Printed in Singapore by Refine Printing Pte Ltd (L011/06/2019)
MCI (P) 076/07/2019 KDN No: 1560 (1270) – (6)
ISSN 2345-7066 (Print) and ISSN 2345-7074 (E-periodical)

Trade Link Media Pte Ltd also publishes:

- Bathroom + Kitchen Today
- Lighting Today
- Security Solutions Today
- Southeast Asia Construction

SOUTHEAST ASIA BUILDING is published bi-monthly by:

Trade Link Media Pte Ltd, 101 Lorong 23, Geylang,
#06-04, Prosper House, Singapore 388399

Tel: +65 6842-2580 Fax: +65 6842 2581

Editorial e-mail: seab@tradelinkmedia.com.sg

Website: www.tradelinkmedia.com.sg

Co. Reg. no.: 199204277K

Scan QR Code



or visit our website
<http://seab.tradelinkmedia.biz>

Connect with us!



[www.facebook.com/
southeastasiabuilding](http://www.facebook.com/southeastasiabuilding)



[www.twitter.com/
SEA_Building](http://www.twitter.com/SEA_Building)



[www.instagram.com/
seab1974](http://www.instagram.com/seab1974)



UNDERSTANDING, ACCELERATED

VENTILATION SOLUTIONS FROM TSI THAT SAVE TIME AND MONEY



TSI ventilation test instruments are designed to accurately and reliably measure a wide array of parameters critical to investigating indoor environments.

- TSI offers a full line of:
- + Capture Hoods
 - + Thermal Anemometers
 - + Hydronic Manometers
 - + Indoor Air Quality Monitors
 - + Micromanometers
 - + Rotating Vanes
 - + Duct Leakages

For more information on TSI's family of ventilation test instruments,

CONTACT US NOW!

Call: +65 65956388

Email: AP_Marketing@tsi.com

Browse our product offerings at
tsi.com/ventilation-test-instruments



Dear readers, in just a couple of weeks, we will be ushering a new brand year. I hope you have a fantastic 2019 despite all the ups and downs. The Nov/Dec is the sixth and final issue of 2019, so make sure you get a copy of it to complete the whole set of the publication for your home or office.

This issue explores the theme of retail design. Inside, you will find some interesting projects, which show how interior design and the nature of a retail business can go hand in hand. I was personally impressed by the choice of colours, materials and even the thought process that went behind the design of some of the retail shops.

In the special feature section, we look at how architectural glass can play a functional and aesthetic role in the design of a building's facade.

Also in this issue, we bring you an interview with Anna Mae Lamentillo, Chairperson of the Build Build Build Committee of the Department of Public Works and Highways (DPWH) in the Philippines. She tells us more about the "Build, Build, Build" programme under the Duterte administration, its achievements and the future of the country's building and construction industry.

If you have any feedback regarding the content of the magazine, please get in touch with me.

Amita Natverlal

NEXT ISSUE THEMES

- Projects – Preservation, Conservation & Restoration
- Trends – Flooring Systems
- M.E.P. Systems
- IoT / Mobile Technology (Advertorial)



Media Partners of SEAB

 Association of Myanmar Architects	 Bangladesh Green Building Council	 Design Council – Sri Lanka
 Emirates Green Building Council	 Foundation for Futuristic Cities	 Green Building Committee BEI MYANMAR
 Green Building Council Indonesia	 Green Building Council Italia	 Green Building Council Mauritius
 Green Building Council Namibia	 Green Building Council Sri Lanka	 Hong Kong Green Building Council
 Interior Design Confederation of Singapore	 Jordan Green Building Council	 Qatar Green Building Council
 Philippine Green Building Council	 Singapore Green Building Council	 Society of Interior Designers (Singapore)
 The Hong Kong Institute of Architects	 Vietnam Green Building Council	 Green Institute Nepal
 Interior Designers Association of Nepal		

powered by

niagara
framework®

JACE 8000 controller



The JACE® 8000 is a compact, embedded IoT (Internet of Things) controller and server platform for connecting multiple and diverse devices and sub-systems. With internet connectivity and web-serving capability, the JACE 8000 controller provides integrated control, supervision, data logging, alarming, scheduling and network management. It streams data and rich graphical displays to a standard web browser via an Ethernet or wireless LAN, or remotely over the internet. Niagara Enterprise Security is a Niagara AX-based application that runs on the JACE 8000. Niagara Analytics 2.0 is a data analytics extension to the Niagara Framework® available on JACE 8000 controllers.

The licensing model for the JACE 8000 controller is simplified and features standard drivers, along with optional IO and field bus expansion modules for ultimate flexibility and expandability. The JACE 8000 controller operates with Niagara 4, the latest version of the Niagara Framework, for optimum performance. In larger facilities, multi-building applications and large-scale control system integrations, Niagara 4 Supervisors can be used with JACE 8000 controllers to aggregate information, including alarms, and historical and real-time data, to create a single, unified application.

Tridium Asia Pacific Pte Ltd
Honeywell Building
17 Changi Business Park Central 1
Singapore 486073

www.tridium.com | tsupportap@tridium.com

TRIDIUM

Evonik enters partnership with Singapore's HDB

Singapore – Evonik and the Housing & Development Board of Singapore (HDB) have inked a strategic partnership to develop innovative and sustainable building solutions for the Republic's urban future. The signing of the Memorandum of Understanding (MOU) was witnessed by Mr. Lawrence Wong, Minister for National Development and Second Minister for Finance, during the Urban Sustainability R&D Congress 2019 on 23 July 2019.

The partnership will enable Evonik to contribute to Singapore's vision to become a smart and sustainable city-state, by mobilizing its technical expertise on resource efficiency technologies. Peter Meinshausen, Regional President of Evonik Asia Pacific South shared that the signing of the MOU is an important stepping stone to establish a long-term relationship with HDB.

To kickstart the collaboration, HDB will begin to explore the use of Evonik's CALOSTAT®, a high-performance insulation material that can offer a superior heat protection for buildings in tropical climate like Singapore.



The signing of MOU. From left to right: Er. Dr. Johnny Wong Liang Heng, Group Director, Building & Research Institute; Dr. Cheong Koon Hean, Chief Executive Officer, Housing & Development Board; Mr. Lawrence Wong, Minister for National Development and Second Minister for Finance; Mr. Peter Meinshausen, Regional President, Evonik Asia Pacific South; and Dr. Ronny Sondjaja, Director Evonik Asia Research Hub. Photo: © Evonik

Combined with the best insulation values, fire protection and sustainability, CALOSTAT® will potentially reduce the heat gain in the building during

daylight while offering best in class fire protection. This will also enable the buildings to become more sustainable and environmentally-friendly.

IMKAN makes pivotal advancements in Egypt acquiring 166 acres of land in Cairo

Abu Dhabi, UAE – Abu Dhabi-based real estate developer IMKAN announced the acquisition of a substantial plot of land in Egypt's New Cairo district and the appointment of a new CEO for the Egyptian arm of its real estate business, IMKAN Misr.

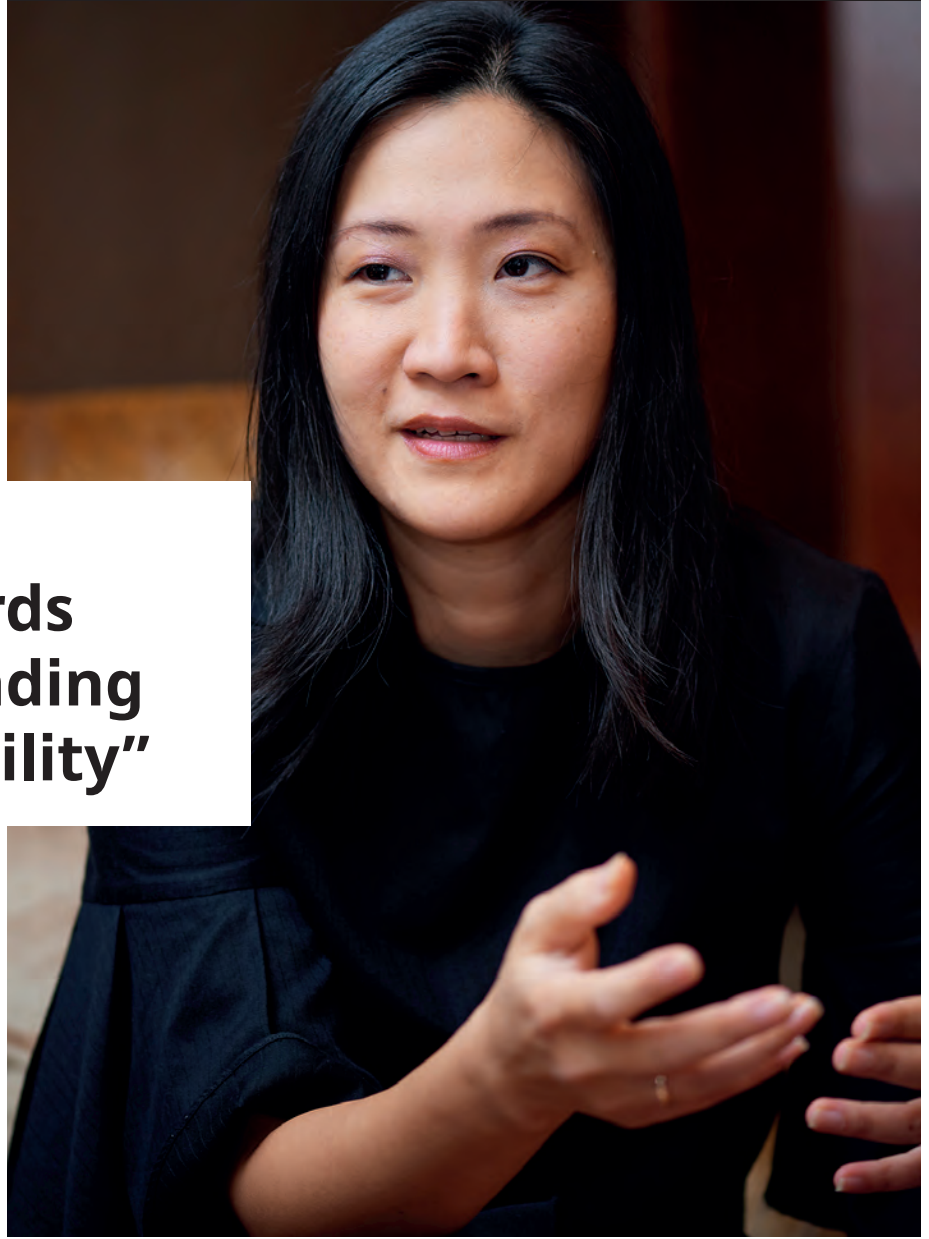
The agreement marks the first implementation of a new initiative by the Egyptian government for land allocation, which was announced by the Minister of Housing Essam El-Gazzar. Under this mechanism, land plots are allocated directly to investors as per their orders. The agreement for the 166-acre plot in New Cairo, valued at EGP 5 Billion (AED 1.1 Billion), was finalised within five days – the shortest period required by Egyptian law – an indication of the government's endeavors to smooth the way for foreign investors.

IMKAN Misr is part of IMKAN's international offering and already includes a substantial project located just 20 minutes away from Cairo Airport. AlBurouj, a residential development starting delivery next month will be a five million square metres complete mixed-use community housing a park, international schools, a retail centre, an office park "smart village", sports club and cultural hub.

Also announced on Sunday was the appointment of Ahmed Fathallah as IMKAN Misr's new CEO. Fathallah is the former Deputy CEO and brings with him over 23 experience across all strategic, operational and finance functions.



IMKAN's Chief Executive Officer, Walid El-Hindi



“Winning the LafargeHolcim Awards connected me to leading experts in sustainability”



Design competitions boost projects, careers, and networking opportunities. Be part of the 6th International LafargeHolcim Awards for exemplary projects and visionary concepts in sustainable construction. Prize money totals USD 2 million.

Independent expert juries evaluate submissions from architecture, engineering, urban planning, materials science, construction technology, and related fields using the “target issues” for sustainable construction of the LafargeHolcim Foundation.

www.lafargeholcim-awards.org

Ascott opens Southeast Asia's largest coliving property lyf Funan Singapore

Singapore – CapitaLand's wholly owned lodging business unit, The Ascott Limited (Ascott), has opened lyf Funan Singapore, the largest coliving property in Southeast Asia. It is also the world's first property under Ascott's new 'lyf' co-living brand that is managed by millennials for the millennials and millennial-minded. lyf Funan Singapore is the first of Ascott's record-breaking property openings in Singapore this year.

Located in the heart of Singapore's Civic & Cultural District, lyf Funan Singapore is at the epicentre of the city-state's buzzing retail, commercial, social and cultural belt. Spanning about 121,000 square feet in gross floor area, lyf Funan Singapore houses 412 rooms across 279 apartments. The nine-storey coliving property will have easy access, via a sheltered underground walkway, to the City Hall Mass Rapid Transit (MRT) interchange that is well-connected to the rest of the city.

lyf Funan Singapore is an integral part of CapitaLand's Funan integrated development, which also comprises two office blocks and a mall offering cutting-edge retail concepts, co-working spaces, urban farm, theatre, cinema, artisan shops, craft workshops, gymnasium, rock climbing, and futsal facility. Guests of lyf Funan Singapore can enjoy convenience with the plethora of recreational, retail, dining and commercial



Photo: © lyf Funan Singapore

options right at their doorstep at Funan as well as surrounding landmarks such as CapitaLand's iconic integrated development Raffles City Singapore and the National Gallery Singapore. Catering to both short and long stays, lyf Funan Singapore is ideal for leisure and business travellers, expatriates, global assignees as well as digital nomads.

Accor & Royal Group announce second Raffles Hotel for Singapore

Singapore – Accor, in partnership with Royal Group, announced that a second Raffles hotel will open in Singapore, with the launch of Raffles Sentosa Resort & Spa Singapore planned for 2022. The proposed resort will feature 61 villas, each with their own private swimming pool, making the latest addition to the Raffles collection of ultra-luxury hotels one of the most exclusive resorts in Asia.

Over 135 years after the original Raffles opened its doors, the second Raffles in Singapore will be an all-villa hotel set in over 100,000 square metres of sprawling tropical gardens

with views over the beautiful South China Sea. Villas will range in size from 260 square metres for the one-bedroom villas to 450 square metres for the four-bedroom villa, all with their own private pool and terrace area for the ultimate in seclusion and comfort. Facilities will include a bar, restaurants, a fitness centre, a celebrations room and two meeting rooms. Those markers that make Raffles such a legendary experience, including the famous Raffles Butlers and Raffles Spa will be signatures of the resort.

Royal Group, who own SO Sofitel Singapore and Sofitel Singapore Sentosa Resort & Spa, will build the new Raffles Sentosa Island on prime land adjacent to the existing Sofitel.

Global design studio Yabu Pushelberg creatively directed the resort's architecture, landscaping, lighting and interiors. The studio began their process by composing a fictional narrative of an elegant Singapore woman moving through defining moments in her life. She begins her journey as a girl in a traditional Singapore family where she learns the importance of heritage. As a young woman, she leaves home to pursue international travels, where she's exposed to different lands and cultures. After exploring the world, she returns to her birthplace, bringing the treasures and learnings from her travels to connect them with what she holds dearest: her roots.



Photo: © Yabu Pushelberg

HVAC:

REACH A NEW LEVEL OF PERFORMANCE AND CONTROL

GRUNDFOS
iSOLUTIONS

A SMART SOLUTION
FOR YOU



CONNECT TO INTELLIGENT SOLUTIONS

HVAC systems in buildings can face many challenges, from poorly commissioned systems to high energy and power consumption, meaning increased energy costs. With Grundfos iSOLUTIONS you can utilise intelligent pumps, components and services, such as remote control, real-time monitoring and performance analysis. Together they enable you to optimise your systems and reach a new level of performance and control.

Discover more at www.grundfos.my



be
think
innovate

GRUNDFOS 

Meraas appoints ASGC to build the region's most advanced cruise terminal

Dubai, UAE – ASGC, one of the leading construction groups in the UAE, has been appointed to construct the new Dubai Cruise Terminal at Dubai Harbour, the first ever dedicated cruise port in the region. When completed, will be the most advanced of its kind in the region.

Located in the heart of Dubai, in the vibrant area between Bluewaters and Palm Jumeirah, Dubai Cruise Terminal will become the main hub for international cruise ships visiting or deployed in the region. The Dubai Cruise Terminal is part of Dubai Harbour – the industry-defining maritime neighbourhood by Meraas.

Work conducted by ASGC on the project will include the construction of two main cruise terminal buildings strategically positioned on a quay of approximately one kilometre, in addition to service buildings, a central unit building with all associated fit-out works, external works, and all fixtures, fittings and equipment.

Mr Bishoy Azmy, CEO of ASGC, stated that projects that contribute to the development of the country's infrastructure and sectors are ones ASGC is proud to be in, and that his company is committed to deliver this project utilising the latest construction processes.

With a combined floor area of 300,000 square feet, Dubai Cruise Terminal will create a unique, iconic entry experience to all cruise ship passengers who arrive in the emirate, and



will have the capacity of accommodating complete passenger turnaround of two mega cruise ships concurrently, accounting to over 15,000 guests.

Each cruise terminal will create an environment of complete luxury and comfort for passengers and crew alike, with simplified processes, seamless flow as well as leisure and retail offerings.

This world-class addition to the city's tourism infrastructure comes in-line with the Dubai Tourism Strategy 2020 that focuses on making the emirate the first choice for international leisure and business travelers.

Wilson Associates announces new Tokyo destination hotel for Marriott International

Singapore – Globally renowned interior design firm Wilson Associates is excited to announce its role with Marriott International for the design of the new mesm Tokyo, Autograph Collection. Located in the heart of WATERS Takeshiba, a sprawling new urban development to the east of Tokyo's



Club lounge. Photo: © Wilson Associates

central business district, the recently renamed destination will offer travelers near and far an inviting reprieve from the buzzing wharf. Scheduled to open on 27th April 2020, the mesm Tokyo, Autograph Collection will feature over 21,000 square meters of exquisitely designed interiors – including 265 inspiring guestrooms and suites, stunning public spaces, and two distinct dining outlets.

Drawing inspiration from the organic movements of the Takeshiba waterfront – recalling the flow of both the people and the waters that surround the mesm Tokyo – the Wilson Associates design concept creates an engaging environment in which cultural tradition and modern innovation coexist in perfect harmony. Employing the richness of local resources and creating unity through a well-appointed art program, the Wilson team cleverly brings together the energy and creativity of the vibrant city with the refined aesthetic of the hotel's discerning guests. Enlisting local Japanese sculptors to enliven the interiors with abstractions of the coast, the exquisite craftsmanship displayed throughout the hotel organically blends the kinetic and animated nature of Tokyo.



WATER, HEATING
& COOLING
under your control



AMR Residential
Commercial
water meters



AMR
Thermal energy
BTU meters



AMR
Industrial / Bulk
water meters

Grundfos launches Distributed Pumping System to meet Asia's sustainable cooling needs

Singapore – Rising temperatures across the world has cast a spotlight on the need to provide cooling in cities without overburdening urban power grids and in turn further contributing to climate change. In response, Grundfos has launched its Distributed Pumping System in Asia, which aims to help air-conditioning systems consume up to 50 percent less energy than current conventional methods.

Conventional systems often use up a high level of energy due to issues such as over-pumping to compensate for discrepancies between the chilled water supply and return temperatures. In addition, they have the tendency to run at constant speed and pressure throughout its operations, regardless of fluctuating cooling demands. The systems' high-energy consumption ultimately contributes to greater carbon emissions, driving climate change.

A first in Asia, Grundfos' Distributed Pumping System is a novel system capable of operating in optimised conditions at any time. It achieves this by intuitively regulating the water flow based on feedback from temperature sensors, meeting the exact requirements of different building zones, and intelligently controlling energy consumption by delivering the right flow at all times. On top of reducing energy consumption and operational costs, this new system achieves comfort for users of the building by ensuring a consistent building temperature at all times.

This revolutionary approach to optimum water distribution is made possible by Grundfos' MAGNA3 and TPE3 pumps – both ranges feature compact, intelligent circulator pumps fitted with built-in sensors, variable speed drive, controller and communication module, and state-of-the-art IE5 motors ensuring the highest efficiency. TPE3 is a dry-runner, vertical, in-line pump used as the primary pumps, while MAGNA3 is a wet-runner circulator used as the secondary pumps.

The self-balancing nature of Grundfos' Distributed Pumping System also means that control valves are not required, removing the need for tedious and time-consuming balancing which also reduces the costs of the initial installation.

With the Paris Agreement goals to limit the global temperature increase to 1.5 degrees Celsius, Grundfos Asia Pacific forecasts



Anders Christiansen, Regional Business Director, Building Services for Grundfos Asia Pacific with Distributed Pumping System

that the demand for distributed pumping systems will increase in the coming years as a result of greater demand for energy efficient solutions.

The high-performing energy efficiency demonstrated by Grundfos' Distributed Pumping System has been recognised in two sustainable cooling projects, which reported that the novel system is able to achieve significant pump energy savings, a significant reduction in energy consumption and operational costs for businesses.

The first project is at Grundfos' Asia Pacific headquarters here in Singapore, which consists of an office and factory block. Over a period of 7.5 months from November 2016 to May 2017, the building achieved 55 percent pump system kWh energy savings.

The second project is with Ngee Ann Polytechnic's Environmental & Water Technology Centre of Innovation (EWTCOI). A pioneer in environmental advocacy, the EWTCOI worked with Grundfos to push an existing Green Mark Platinum building to achieve greater energy efficiencies. The project also saw a 55 percent pump system kWh energy savings.

Do you have news?
Don't keep it to yourself....

Share it with us!
Email seab@tradelinkmedia.com.sg



SEAMLESS,
DECORATIVE
FLOORING



Colourful Terrazzo,
Flakes, Pebblewash
Designs

FUNCTIONAL SPACE
WITH PERSONALITY



Mapei Far East Pte Ltd
28 Tuas West Road, Singapore 638383
T: +65 6862 3488 E: mapei@mapei.com.sg
Learn more on www.mapei.com.sg

   Mapei Singapore

 **MAPEI**[®]
ADHESIVES • SEALANTS • CHEMICAL PRODUCTS FOR BUILDING

30
MAPEI SINGAPORE
30TH ANNIVERSARY



Singapore to participate in World Expo 2020 in Dubai

Singapore – Singapore will be participating in Expo 2020, the next World Expo, which will be held in Dubai, United Arab Emirates (UAE), from 20th October 2020 to 10th April 2021. The Singapore Pavilion, titled 'Nature. Nurture. Future', will pay tribute to Singapore's journey towards growth, sustainability and resilience.

The Urban Redevelopment Authority (URA) will lead Singapore's participation in Expo 2020 Dubai, coordinating and collaborating with partners from the public and private sectors to realise the Singapore Pavilion.

Global platform for making connections

Themed 'Connecting Minds, Creating the Future', Expo 2020 Dubai will be a celebration of key global developments and achievements, offering visitors 173 days of technology, art, science, culture, creativity, food and music. It will provide a platform to address global challenges and foster creativity, innovation and collaboration among its 192 participating countries and millions of visitors. Expo 2020 will also be the first World Expo to be hosted in the Middle East, Africa and South Asia (MEASA) region and is expected to attract 25 million visits.

The Singapore Pavilion will occupy a 1,550 square-metre site within the Sustainability District of the 4.38 square-kilometre Expo 2020 site in Dubai South, an easy 30-minute drive from Downtown Dubai and less than an hour's drive from both the Dubai and Abu Dhabi international airports.

Designed to present a microcosm of the nation's transformed landscape to visitors, the Singapore Pavilion will highlight how the country continues to strive towards liveability, sustainability and resilience through innovative urban solutions. It will also serve to showcase Singapore's strengths and expertise with the aim of creating potential business opportunities for the country.

Profiting Singapore's expertise in urban solutions

Expo 2020 Dubai will mark Singapore's fourth presentation at a World Expo, having also participated in 2000, 2005 and 2010. Singapore's participation in Expo 2020 Dubai underlines its close bilateral ties with the UAE. As hubs for our respective regions, Expo 2020 Dubai will facilitate further expansion of Singapore's network in the Middle East region and will also deepen the engagement between the two countries.

Chief Executive Officer of the URA Lim Eng Hwee said: "The Singapore Pavilion is centered on our country's guiding ethos of sustainable growth where we can have both economic growth and a high quality living environment. Through the presentation at Expo 2020 Dubai, we hope to celebrate Singapore's spirit of ingenuity and creativity by profiling Singapore's innovative urban solutions, design and capabilities through programmes and activities that will take place throughout the six-month Expo. We invite Singapore businesses and organisations to play a part in realizing the Singapore Pavilion and reach out to a global audience in the dynamic MEASA region."

WACKER opens technical centre for tile-adhesive applications in Bengaluru

Bengaluru, India – Munich-based chemical company WACKER is strengthening its presence in India by opening a technical centre in Bengaluru. Located in the south of the country, it will serve as a regional competence centre for tile-adhesive applications. Continuing growth in the Indian construction sector is driving demand for personally tailored solutions for tile adhesives. The new technical centre enables WACKER to provide its customers in the local area with even better support in developing innovative solutions.

The technical centre in Bengaluru specialises in the development of



Photo: © WACKER Chemie AG

customised tile-adhesive applications. Adhesive strength and flexibility are vital for tile-adhesive formulations. WACKER's polymeric binders improve how tiles adhere to the substrate, while permitting flexibility within the adhesive – an effective way of preventing cracks and breakage. WACKER markets its dispersible polymer powder formulations under various brands, such as VINNAPAS®, VINNACEL® and ETONIS®. These powders make the adhesive highly water-resistant and extremely easy to process. What is more, formulations containing WACKER's polymer powders permit the use of special installation techniques, known as thin-bed technology. This makes significant savings possible in terms of raw materials, such as cement or sand, the latter being a key raw material in the construction sector. The global construction boom means that sand is becoming increasingly scarce.

The new technical centre in Bengaluru is WACKER's third such facility in India. A centre for polymer applications was opened in Mumbai back in 2009. Expanded in 2011, this technical centre supports customers from sectors such as construction, paints and coatings, plastics and textiles in developing new products and applications for the Indian market. WACKER also operates a technical centre for silicone products in Kolkata.

WACKER has been supplying chemical products to India since the 1970s. Established in Kolkata in 1998, the joint venture Wacker Metroark Chemicals Pvt. Ltd. began producing a wide variety of silicones as early as 1999. The fully owned subsidiary, Wacker Chemie India Pvt. Ltd., was founded in 2007 in response to increasing market demands and potentials.

Khidmah inaugurates full-fledged facilities management training centre

Abu Dhabi, UAE – Khidmah, one of the leading Facilities Management (FM) and companies, launched a state-of-the-art Training Centre in Abu Dhabi, to elevate the range of skillsets and knowledge of its technical staff. The 'Khidmah Training Centre' is part and parcel of the company's efforts to deliver market-leading solutions, unique customer experiences and service delivery excellence to its clients across the region.

The Khidmah Training Centre will be led by certified trainers and has been divided into zones that replicate real-life work scenarios, with dedicated sections that focus on mechanical, electrical and plumbing services, cleaning, maintenance, hospitality, customer service skills and much more. The centre is also equipped with a lecture hall that will be used to deliver various training courses and certifications to Khidmah staff including The British Institute of Cleaning Science (BICS) certification. Khidmah currently has over 3000 technical staff working in the UAE alone.

Sara Momtaz, Khidmah's Executive Director, said, "Our people have always been our greatest asset, and as such, are the driving force behind Khidmah's success. It made perfect sense for us to establish our very own FM training centre to support our staff's technical skills development and career progression journey."

Amantaka launches new Buddhist Centre

Singapore – At the foot of sacred Mount Phousi, sits the UNESCO protected Luang Prabang, Laos, home to Amantaka. Resting on a large garden estate, the resort is a sanctuary of calm with an array of private pools, yoga studio, spectacular central pool and state-of-the-art Aman Spa.

Embodying the living spirituality of Luang Prabang, Amantaka has launched a Buddhist Learning Centre, designed to educate and immerse guests on the practice and principals of Buddhism, bringing the resort closer to the local community and customs.

With strong ties to the spiritual community since its conception ten years ago, Amantaka, true to its name which means 'teaching of the Buddha', is supporting local monasteries by creating this Buddhist Learning Centre within the resort.

ACCELERATE YOUR BUSINESS GROWTH

Take advantage of the leading Asian trade show for roller shutters, doors/gates, windows and sun protection systems

24 – 26 February 2020 Shanghai • China

- Exclusively B2B format
- Business matching program
- Educational and networking events
- Market innovations • trends • smart home • future living
- 65,000 sqm of exhibiting space • 41,505 visitors
• 12,784 international visitors • 642 exhibitors



Tap into the \$1.5-trillion Chinese home decoration market! This year's show features a special focus on Soft Decoration, Outdoor Furniture, and Future Living solutions. At the HD+ Home Decoration Asia co-show, you can connect with leading manufacturers and distributors as you witness the latest cutting-edge technology, innovations, and design trends.

24 - 26 February 2020
Shanghai New International
Expo Centre | SNIEC
Shanghai, China
<http://rtasia.org/en/>



SCAN & REGISTER FOR FREE



Leading Asian trade fair for roller shutters, doors/gates, windows and sun protection systems



IBEW 2019 presents solutions to transform the way the local industry builds and constructs



Opening ceremony of IBEW 2019. Photo: © BCA

Singapore – Over 12,000 overseas and local visitors attended the inaugural International Built Environment Week (IBEW) 2019 event held from 3 to 6 September 2019 at Marina Bay Sands in Singapore.

Organised by the Building and Construction Authority (BCA) of Singapore, the exhibition featured four trade shows running concurrently to cover the entire built environment value chain. Over the four days, more than 500 companies exhibited at the event to showcase their solutions to create a smart and sustainable built environment.

Held under the theme "Transforming the Way We Build", IBEW 2019 comprised of BEX Asia, Innobuild Asia, Mostra Convegno Expocomfort Asia and Smart Cities and Buildings Asia.

Returning in its 12th edition, BEX Asia featured sustainable solutions for buildings across all sectors and Mostra Convegno Expocomfort, now in its fifth edition (MCE) Asia exhibited solutions to maximise building efficiency and energy operations. New to the portfolio this year were Innobuild Asia which presented cutting-edge construction materials, tools and technologies to drive construction productivity and resource efficiency, and Smart Cities and Buildings (SCB) Asia which highlighted the convergence of technology and construction creating more liveable cities.

Mr Hugh Lim, BCA CEO, said: "Since the Construction Industry Transformation Map (ITM) was launched two years ago, our Built Environment sector has seen good progress. Leading firms are staying ahead of the curve through deep capability building, strong collaborations and co-creating effective solutions for

the built environment sector. The inaugural IBEW is a shared platform that reflects both the aspirations and the progress of the built environment sector in Singapore. Together with like-minded international partners, we envision IBEW to be the platform in the region for rich exchange of ideas and co-creating innovative solutions to transform the built environment."

IBEW 2019 also featured BE Connect, a premier business platform that brought together urban solution providers from Singapore, developers from the region, and the investment community to address urban challenges in the region. Over the past nine months, BCA has met with close to 100 developers in China, India, and Southeast Asia to understand their needs, introducing solutions, and sharing relevant experience by Singapore's urban solution providers. BE Connect marked a major milestone in a year-round effort to assist buyers in the region to access fully integrated solutions across the entire built environment value chain for their building needs.

Mr Desmond Lee, Minister for Social and Family Development & Second Minister for National Development was invited as the guest-of-honour for the opening of the BE Connect event on 5 September 2019.

Commenting on the event, Mr Tai Lee Siang, Executive Director, BuildSG, BCA, said: "BE Connect is unique because it is the first time that we bring a business-matching platform into the international built environment week. This platform would see 80 C-suite developers come to meet with our Singapore industry players on the built environment. The challenges that Built Environment industry players have is about



A photo from BE Connect, a premier business platform to bring together urban solution providers, developers, government agencies and investment communities to address urban challenges in the region. Photo: © BCA

growing their business and growing their companies both in terms of strength as well as number. Growing in number can be challenging as Singapore is a small country and we have a limited market size. In order for local companies to grow

both in terms of strength and capacity, we have to look at the overseas market and having this platform will really benefit these local companies. With BE Connect, we actually bring the market to them here, right at the doorstep of Singapore and definitely fits into the broader context of IBEW. For example, Singaporean companies are familiar with the sustainability drive and the green building movement. Singapore has a huge target to meet to achieve 80 percent green buildings by 2030. This has spurred innovation in Singapore and we are particularly strong in green solutions.

If we can bring the same solutions to the region, we are likely to see a greener and sustainable region together as a whole. We hope to grow BE Connect bigger next year. This year we greet 80 developers, and in the future we want to involve more Singapore companies, if possible, all of our stakeholders one way or another, so that everybody has something to take away from this event."

In addition to the trade shows, more than 70 professionals from the building and construction industry shared their knowledge and trends and exchanged ideas with the attendees during the tech talk seminar areas covering three thematic topics at Digital Rally, Energy Xchange and Green View.

Al Zahia sets a new benchmark by launching exclusive residential plots at "Orchid" with direct access to the Northern Emirates' biggest mall

Sharjah, UAE – Sharjah Holding PJSC, a strategic partnership between Majid Al Futtaim Properties and Sharjah Asset Management, announced the launch of its newest neighbourhood – Orchid – offering buyers the opportunity to own a limited number of exclusive residential plots, ranging from 5,000 square feet to 12,000 square feet, with ready infrastructure at Sharjah's premier lifestyle destination.

This one-of-a-kind development with a direct connection to the Northern Emirates' largest mall – City Centre Al Zahia – and Sharjah's biggest private park – Al Zahia Central Park – will offer an unrivalled lifestyle. For the first time, it will be possible for buyers to design and build bespoke luxury mansions and villas at Al Zahia.

The neighbourhood was designed in response to buyers' growing demand for premium plots where they can design their own signature homes and enjoy the amenities of Sharjah's premium gated community. The plots at Orchid will spread across the 1.4 million square feet neighbourhood, providing privacy and a sense of community. The 8,000-12,000 square feet plots are ideal for villas with 6-8 bedrooms, while the 5,000 square feet plots will comfortably accommodate a 4-bedroom villa. Buyers can choose to increase the size of their properties by amalgamating adjacent plots.

Shadi Al Azzeh, Al Zahia Project Head at Majid Al Futtaim Properties, said, "Al Zahia has established an excellent



reputation by building high quality homes, creating Sharjah's most desirable community and fostering a genuine sense of belonging. Today, we are delighted to launch Orchid, our latest exclusive neighbourhood that offers both the flexibility of designing and building your own home and all the benefits and privileges of Al Zahia's premier lifestyle. We are constantly striving to meet our customers' needs, and the launch of Orchid's premium plots reflects Al Zahia's maturity and appeal and the strong growing demand from distinctive customers who aspire to create unique homes for their families at Sharjah's premier lifestyle destination."

Amantaka launches new Buddhist Centre

Luang Prabang, Laos – At the foot of sacred Mount Phousi, sits the UNESCO protected Luang Prabang, Laos, home to Amantaka. Resting on a large garden estate, the resort is a sanctuary of calm with an array of private pools, yoga studio, spectacular central pool and state-of-the-art Aman Spa. Embodying the living spirituality of Luang Prabang, Amantaka has launched a Buddhist Learning Centre, designed to educate and immerse guests on the practice and principals of Buddhism, bringing the resort closer to the local community and customs.

With strong ties to the spiritual community since its conception ten years ago, Amantaka, true to its name which means 'teaching of the Buddha', is supporting local monasteries by creating this Buddhist Learning Centre within the resort. As part of the experience abbot Sengdao Santikaro offers daily private teaching for guests for up to an hour and a half, asking pertinent questions, to gauge the guest's knowledge of Buddhism, before talking through the five principals of good living. Each session will also explore how meditation enables individuals to recharge, switch off and be present. The activity takes place at the resort's yoga studio, which is converted into a space of openness, learning and connectivity, where guests



come away enlightened and bonded. In addition to this practice, Senior Monk Sombath Watsiphoutthabat offers personalised tours of Wat Siphoutthabath temple, giving a glimpse into his world for a truly authentic encounter.

CapitaLand achieves international acclaim in sustainability with listings on Dow Jones Sustainability Indices and Global Real Estate Sustainability Benchmark

Singapore – CapitaLand has achieved international acclaim for its efforts in sustainability across its global portfolio. CapitaLand is listed on the Dow Jones Sustainability World Index (DJSI World) for the eighth consecutive year, cementing the company's reputation as a leader in sustainability in real estate. CapitaLand is one of only two Singapore companies to be listed on the DJSI World, which is widely noted to be the gold standard for corporate sustainability.

CapitaLand has also retained its listing on the Dow Sustainability Asia Pacific Index (DSJI Asia Pacific)¹ for the 11th year, making CapitaLand the first and longest standing company in Singapore to be listed consecutively on the DJSI Asia Pacific.

The inclusion on the DJSI indices is explicitly tied to the interest rates of CapitaLand's sustainability-

linked loans totaling S\$600 million. Given CapitaLand's achievements of environmental, social and governance (ESG) metrics, including maintaining its listing on the DJSI indices, the interest rates on these loans will be reduced.

CapitaLand came in first place across four categories in the GRESB1 2019. Internationally, CapitaLand was the leader in the Global 'Diversified – Listed' category. CapitaLand is the only company in Singapore/Asia to achieve this accolade twice.

In the region, CapitaLand was the leader in the Asia-Pacific 'Diversified', Asia 'Diversified' and Asia 'Diversified – Listed' categories. CapitaLand Mall Trust (CMT) came out top in the Asia 'Retail – Listed' category. CapitaLand also scored 'A' for public disclosure in GRESB 2019. CapitaLand, CMT, CapitaLand Commercial Trust and CapitaLand Retail

China Trust also scored 'A' for public disclosure in GRESB 2019.

Ms Lynette Leong, Chief Sustainability Officer, CapitaLand Group said: "CapitaLand's inclusion in these international indices affirm our reputation as a global real estate leader in sustainability. Our emphasis on sustainability extends beyond playing our part as a responsible global corporate citizen. We aim to future-proof our business as we work towards delivering long-term value for our stakeholders, and our achievement of interest savings as a result of our sustainability efforts shows that we can also do well when we do good and do right. CapitaLand will continue to innovate and step up our ESG efforts as we create value-adding and sustainable spaces for the community to live, work and play."

Pomeroy Studio masterplans Kallang Alive: An innovative, recreation and entertainment precinct in Singapore

Singapore – Award-winning Singapore-based interdisciplinary sustainable design firm Pomeroy Studio has collaborated with national sporting body, Sport Singapore, to create an 89-hectare sports and recreation-oriented masterplan in Singapore.

It is envisaged to be one of the world's most sustainable sport and recreation precincts. The designers and thought leaders of sustainable-built environments are the lead masterplanner, in collaboration with global infrastructure and transport engineers, Arup.

The masterplan will contain a host of sport and entertainment related facilities, including a state-of-the-art football hub and a tennis centre for community, as well as international tournaments. There will also be a Youth Hub, where proposals for a velodrome, speed climbing facilities and BMX sport are being considered. The Kallang Theatre is also planned to be redeveloped into an integrated sport, entertainment and lifestyle centre.

The waterfront along Jalan Benaan Kapal is envisaged to become a green community space named Benaan Kapal Green. Lastly, another project that is being explored is the Alive Gateway and Loop. The loop seeks to trace the precinct's circular airfield heritage, and link the key attractions within the precinct by a walking and cycling path that interfaces with Singapore's Park Connector Network.

The masterplan's proposed circular 'loop' celebrates the sites' unique aviation history. Prof. Jason Pomeroy, founding principal of Pomeroy Studio explained, "The site was a former airfield; characterised by a 400 metre radius circular landing zone that served as a gathering point for many a person landing in Singapore. We are celebrating the circular geometry of the airfield as a walking and cycling loop that undulates through varied landscapes, and links up the waterfront, across Stadium Boulevard and potentially Nicoll Highway. The loop will form a heightened means of mobility for everyone visiting the various sports, entertainment, and recreational venues



Kallang Alive masterplan. Photo: © Pomeroy Studio



Kallang Theatre redevelopment. Photo: © Pomeroy Studio

within the Kallang Alive precinct, and will thus, re-establish a new gathering point; though this time for the community, as well as many a Star of track, field, court or stage."

In line with Singapore's drive to be both a garden city and a car-lite smart nation, the masterplan integrates a vibrant "people's park" that is composed of foliated waterfront boardwalks, wetlands, and lush parklands, that embraces nature's environmental benefits of temperature reduction, carbon sponge, and storm water attenuation.

The plan to integrate the pedestrian/cycle/ e-scooter-friendly loop into these green open spaces further provides seamless mobility to and from the various venues and beyond. It also

seeks to cultivate the use of smart green technology to enhance user experience. For example, green technologies that comfort control the temperature and humidity of walking and cycling are being explored. Such technologies could be coupled with solar power and kinetic pressure pads in the floor to generate clean energy. Digitally-interactive light and art installations that tell a tale of both Singapore's culture and sporting heritage seek to enhance the experience for residents, visitors, and tourists alike.

Mr Lim Hong Kiang, Chief of Sport Infrastructure Group, SportSG said, "We envision transforming Kallang into a vibrant sport, recreation and lifestyle precinct. We work with agencies like Pomeroy Studio to come up with ideas and designs that preserve the area's essence whilst incorporating elements of sustainability and technology. We look forward to bringing to life the vision of Kallang Alive that people can enjoy."

Works are currently underway with the Kallang Football Hub being the first to be completed by next year.

Mitsubishi Electric and Mitsubishi Electric Building Techno-Service jointly to launch M's BRIDGE™ Global Remote-maintenance service for elevators

Tokyo, Japan – Mitsubishi Electric Corporation and its wholly owned subsidiary Mitsubishi Electric Building Techno-Service Co., Ltd. announced that they would launch the M's BRIDGE™ global remote-maintenance service for the continuous monitoring, inspection and data analysis of elevators via an IoT platform on 1st October 2019. The service initially will launch in Hong Kong and Singapore and then expand to other Asian regions, Europe and the Americas, targeting launches in 15 countries by the fiscal year ending in 2022. By providing the service on a global basis, Mitsubishi Electric expects to contribute to the safety, peace of mind and convenience of customers.

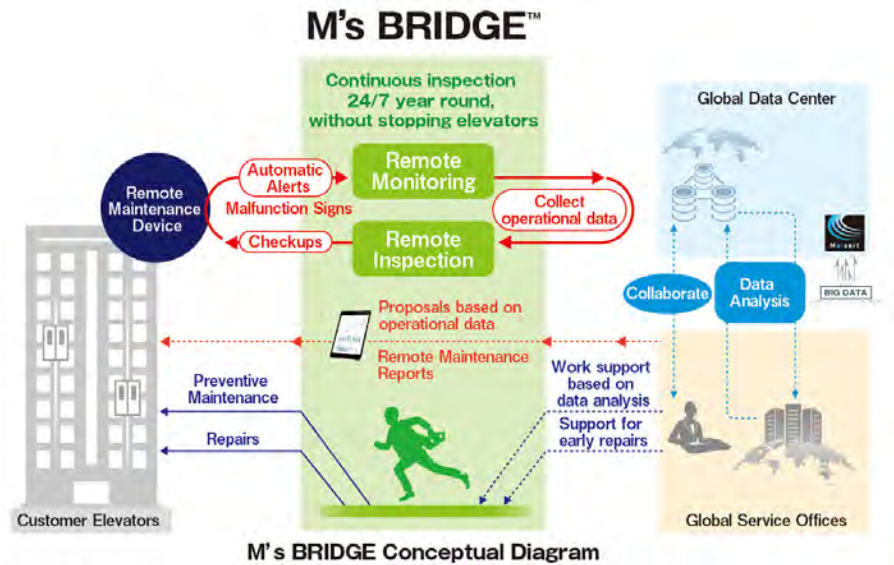


Photo: © Mitsubishi Electric Corporation

Main Features of M's BRIDGE

- 1) Faster and more convenient elevator repairs based on remote failure detection and analysis
 - Remote 24/7 monitoring of elevator operation and automatic detection of failures
 - Remote analysis of failure data and identification of causes to facilitate rapid repairs, contributing to improved safety, peace of mind and convenience for customers
- 2) Remote inspection data for efficient, high-quality maintenance
 - Automatic detection and alerts, even for minor signs of potential malfunctions, to enable maintenance engineers to prevent elevator failures
 - Efficient, high-quality maintenance based on collection and analysis of remote inspection data that maintenance engineers can utilise during regular on-site inspections

Future Development

Continuously collecting and accumulating data from elevators worldwide equipped for this service, and analysing and learning from big data using Mitsubishi Electric's Maisart® original AI technology, will enable the company to forecast optimal timing for maintenance, parts replacement and repairs, as well as ensure peak performance according to specific conditions for each elevator.

*Mitsubishi Electric's AI creates the State-of-the ART in technology: Launched on May 24, 2017, Mitsubishi Electric Corporation's AI technology brand is aimed at making all devices smarter.

Jerde establishes presence in Southeast Asia

Hong Kong – JERDE (The Jerde Partnership), an iconic and internationally renowned architecture and urban planning firm, announced that it has formally established a presence in Southeast Asia, and has hired James Chew as Director of Business Development for the region. Chew – who will be based in Singapore in a new

office to be opened by JERDE later this year – will spearhead the firm's new business efforts in Singapore, Vietnam, Malaysia, Indonesia, the Philippines, and other neighbouring countries in the region. This is in addition to JERDE's already established offices in Shanghai and Hong Kong, which serve the Chinese and Asia Pacific markets, respectively.

To support this endeavour, JERDE Design Principal and shareholder Ken Ho will transfer from Los Angeles to Singapore early next year. Ho, himself Singaporean, will bring vast international experience to the regional office and will further lend the firm ownership presence there. Ho will help to drive growth across Southeast Asia.

With the mission of expanding JERDE's special brand of placemaking, the establishment of a permanent presence in Singapore will strengthen the firm's presence in Southeast Asia, coinciding with a growing demand for Transportation Oriented Developments (TODs) and mixed-use projects in the region. The move also allows JERDE to enhance its client services through the city-state's close proximity to the region and comprehensive travel option. JERDE's globally proven expertise in this area has seen the launch of successful projects that act as catalysts in their communities and help generate economic benefit, especially in emerging markets.

Chew has more than 30 years of real estate industry experience in planning

and design, management, marketing, and business development. Working throughout Southeast Asia, his public and private sector experience includes the development of resorts, hospitality, residential, retail, office, mixed-use, new towns, golf courses, and medical parks.

Commenting on his appointment, Chew said, "It's an honour to join JERDE – one of the world's most respected international architectural firms – and open their Singapore office. I hope to expand JERDE's business in the region, and in the process, help the firm expand its special brand of placemaking to generate significant economic benefits to a host of new communities in Southeast Asia."



James Chew

Wilson Associates announces two new hires for its Singapore studio

Singapore – International design firm Wilson Associates is pleased to announce the latest additions of Victoria Edwards and Robyn Gan to the Singapore studio's leadership team as Design Directors.

Bringing over a decade of industry experience to her new role as Design Director at Wilson Associates, Victoria Edwards' accomplished career spans work on both sides of the table – from owner-operator to designer. Her unique perspective has fostered both a passion for design and an eye for detail, resulting in creative, inspiring interiors for high-end clients around the world. In her new role, Victoria will be responsible for maintaining the Wilson Associates' standard of excellence at each stage of the design process. She will be tasked with overseeing the direction and daily activities of the internal team, ensuring that the needs of her clients are met, and expectations are exceeded along the way.

Joining Victoria as Design Director, Robyn Gan comes to Wilson Associates with a strong background in hospitality procurement and Furniture, Fixtures &



Robyn Gan

Equipment (FF&E) design. Leveraging nearly two decades of experience managing product supply, manufacturing, and installation for a diverse range of projects, Robyn's expertise translates seamlessly into the firm's uncommon styling and accessorising practice. In her new position, Robyn will work in tandem with the Singapore studio's design team,



Victoria Edwards

as well as Wilson Associates' Singapore-based art consultancy group, to source and secure all the furnishings, fixtures, and decorative components of a project. Robyn will also lead on-site staging and installation, ensuring the finished result is in harmony with overall design direction, and ultimately brings the client's vision to life.

PEFC holds roundtable discussion on responsible wood sourcing

Singapore – The Programme for the Endorsement of Forest Certification (PEFC) held a roundtable discussion on COC certification to advance responsible sourcing of wood products and sustainable supply chains in Singapore at the Grand Copthorne Waterfront Hotel on 19 September 2019.

The event attracted around 50 professionals from various organisations from private and public sectors. They included packaging companies, paper and printing service providers, manufacturers and government bodies such as BCA, NParks, Singapore Accreditation Council and Singapore



The event was attended by as many as 50 industry professionals.

Institute of International Affairs.

The event celebrated the launch of the PEFC COC programme under the Singapore Accreditation Council and PEFC's 20th anniversary celebration, in the key presence of Ben Gunneberg, CEO and Secretary General, PEFC International, based in Switzerland.

In his address, Ben said that the major benefit of COC certification is about achieving dialogue with stakeholders and contributing to people's livelihood, that is increasing the income of poor people. "Forests are important because they have massive impact on people. Our way of life depends on sustainable forest management so we have to create a sustainable landscape. The biggest and fastest area for PEFC certification is in Asia," said Ben.

Ms Lee Ham Eng, Deputy Director, Singapore Accreditation Council told the gathering that this scheme provides greater support to the industry to meet the Green Mark requirement for Mass Engineered Timber (MET) to be sourced from sustainably managed forests. It also facilitates recognition and



Lee Ham Eng, Deputy Director, Singapore Accreditation Council (left) and Ben Gunneberg, CEO and Secretary General, PEFC International, launched the PEFC COC programme under the Singapore Accreditation Council at the event.

acceptance of certified wood products from Singapore's key trading partners, notably Indonesia, Malaysia and China, all of which have PEFC endorsed forest certification systems.

For more information, visit the website www.pefc.com.

IWG launches Asia's first Signature by Regus Centre in Singapore

Singapore – Leading flexible workspace provider IWG has announced the launch of the first Signature by Regus in Asia. Located on Level 42 and 43 of Asia Square Tower 1, the highest floors in the building, Signature by Regus provides members exclusive access to high-end serviced offices and vibrant shared co-working areas within an accessible and prime office location in Singapore.

At over 71,000 square feet, the stylish and sophisticated workspace provides 134 private offices, 64 desks, seven rentable conference rooms, a business lounge and open co-working areas across two floors. The centre also provides nursing rooms, telephone booths, outdoor seating



Photo: © Signature by Regus

areas, in addition to its ready-to-use facilities such as high-speed Internet, telephony service, reception area and dedicated customer service.

The centre is also highly connected, just 300 metres away from Raffles Place or Marina Bay MRT station and bus services. On the ground floor, members can dine at a wide variety of restaurants and cafes such as My Awesome Café and Pho Stop Vietnamese restaurant. Signature by Regus is also close to downtown

Singapore such as The Promontory@Marina Bay and Red Dot Design Museum, where members can unwind and recharge after a long day of work and meetings.

Blink Group unveils interior design and architecture of Raffles Maldives Meradhoo

Singapore – BLINK Design Group (BLINK) melds the magic of the Maldives with Raffles Hotels and Resorts' five-star heritage in a highly anticipated new resort: Raffles Maldives Meradhoo.

Enveloped in the pristine sanctuary of the Gaafu Alifu Atoll, the 38-villa resort is a destination in its own right, masterfully planned to cater to discerning travellers in pursuit of a luxurious and meaningful escape. Opened in May 2019, the resort marks Raffles' debut in the Maldives.

Commissioned for the architecture and interior design renovation of the property, BLINK envisioned an oasis of laidback luxury. To deliver an exquisite balance between long-standing traditions and a unique design sensibility, BLINK selected colours associated with Raffles and motifs influenced by the island.

Inspired by the local environment, design elements throughout the property depict nuanced takes on marine life and sea creatures. As materials on the island are scarce, BLINK sourced and designed a mix of imported and custom-built furniture suitable for indoor and outdoor use. Soaring seven-metre ceilings with exposed beams painted in grey-blue allow natural light to flood into the rooms, easily adjusted with fully



Raffles Maldives Meradhoo's Thari restaurant. Photo: © Raffles Maldives Meradhoo

retractable blinds that lend the feel of a colonial home.

Set to open its doors in early 2020 is the Raffles Royal Residence, which will offer the ultimate island experience.

Manly Beach inspired update for the Sebel

Singapore – The Sebel Sydney Manly Beach, managed by Accor Vacation Club has completed a full upgrade incorporating a new "Coastal Series" design theme.

The stunning new design reflects the hotel's enviable location on the southern end of popular Manly Beach – named Australia's best beach in TripAdvisor 2019 Travellers' Choice Awards.

The Sebel Sydney Manly Beach's extensive fit-out incorporates new-



Photo: © The Sebel Sydney Manly Beach

look accommodation plus completely updated public spaces – including the hotel's pool area – taking into careful consideration the specific needs of longer-stay leisure travellers.

A fresh kitchenette design in apartments allows for copious amounts of storage, while pristine new Caesarstone Blanco Drift bench tops enhance the experience for self-catering guests. Modified bathrooms now provide ultra-modern fittings and accessories – such as new vanities – delivering a more luxurious feel for holidaymakers.

In addition to new paint, improved modern lighting, carpet and tile floor coverings, the refurbishment included new Samsung 55" televisions, as well as new bedding, furniture and soft furnishings, in guest rooms and apartments. The hotel has also introduced USB incorporated wall plugs and wireless Qi chargers for added convenience.

The Sebel's new design draws from the vibrancy of the local area in the texture and colour scheme of the apartments, and specially designed and custom made carpet. In support of the hotel's Planet 21 environmental charter, 100 percent recyclable and low environmental impact Biowood panelling features on selected walls throughout the apartments, while Mod Wood decking has been used in places underfoot. Both are textural and warm additions that add further depth to The Sebel's finished walls and floors, adding to the overall aesthetics of the room with a relaxed sense of breezy beach living.

The mix of light wall colours and natural timber-look tiles adds to the light and spacious feel of the rooms. This is further complemented by modern furniture choices and neutral fabrics and materials (think woven basket storage, plus stylish bench seats and ottomans) which all add to the hotel's fresh on trend appeal.

ABS 2019 presents solutions so tackle climate change in the built environment

Singapore – The Architecture & Building Services (ABS) 2019 series took place from 1–3 October 2019 at the Marina Bay Sands Singapore Expo & Convention Centre.

The three-day show which offered visitors and delegates six key architectural and building services exhibitions, and 12 industry conferences was officially launched by guest-of-honour Mr Zaqy Mohamad, Minister of State, Ministry of National Development & Ministry of Manpower, Deputy Government Whip.

In view of recent developments with regards to the announcements of Government policies pertaining to Climate Change which will impact Singapore's Built Environment, ABS 2019 was well timed to place the spotlight on the various industries which are directly connected to the built environment. ABS 2019 was also an important platform where the Government announced initiatives in response to Singapore's dynamic and ever-changing built environment.

ABS 2019 was held in three exhibition halls covering a total floor space of approximately 10,000 square metres. It presented an array of new technologies and solutions to manage climate change, environmentally sustainable products, as well as the latest Virtual Reality (VR) tools employed by the built environment industry.

Visitors were also introduced to the latest products and services, which catered to the needs of a Smart Nation, architecture and facility management industries. Around 250 exhibitors from 15 countries took part in ABS 2019.

Industry showcases pertaining to the built environment

ABS 2019 was driven by ArchXpo 2019, along with five other international showcases – International Facility Management Expo (iFaME) 2019, LED & Light Asia 2019, Safety and Security Asia (SSA) 2019, Fire & Disaster Asia (FDA) 2019, and Work Safe Asia (WSA) 2019.

All six exhibitions created a comprehensive and integrated mega platform for all building needs in



Official opening ceremony of International Facility Management Conference & Expo 2019 & ArchXpo 2019. Photos: © CEMS

Singapore and the region, co-located under one roof. A total of 10,000 visitors, conference delegates and key players from various related industries including architects, builders, contractors, developers, engineers, facility managers, government agencies, housing developers, interior designers,

visited the exhibition.

Organised by Conference & Exhibition Management Services Pte Ltd (CEMS) and Singapore Institute of Architects (SIA), ArchXpo 2019 was the 6th International Exhibition for Architecture & the Built Environment, which served as the addition to the key pillars of

the Archifest series. ArchXpo 2019 also served as a key gathering point for industry experts and talents who contribute towards architectural and the built environment design excellence, as well as an invaluable platform for the exchange of research and innovation in architectural design, practice, and education.

Specialised conferences to discuss new challenges

Apart from the six exhibitions, ABS 2019 also featured 12 conferences, workshops and master classes led by industry experts, which were designed to address new demands and developments, which will directly affect the Built Environment.

Some of the topics at the various conferences discussed key issues facing the built environment industry such as Smart Nation technology, smart facility management, the safety and security of people and buildings, enhancement of fire safety in residential and commercial buildings, as well as manpower management.

Awards

Another highly anticipated event for the local Facility Management (FM) industry at ABS 2019 was the Singapore FM Awards 2019 which was held to encourage and offer a platform to recognise companies which are leaders in FM solutions, as well as those who have

made important contributions to the knowledge, practical application, and sustainable performance of Singapore's FM industry which includes the building and real estate sectors. The awards were presented at the Singapore FM Awards Gala Dinner on 1 October 2019.

The Merlion Awards also honoured the most outstanding innovations of the safety and security industry with five categories ranging from Surveillance Cameras, Access Control, Alarm Systems, Mobility Technology, and Security Robotics (latest category this year). The Awards aim to give outstanding companies the recognition of excellence as they showcase their exemplary products at the exhibition.

Amazon inaugurates its first owned and world's largest campus building in Hyderabad

Hyderabad, India – Located in Hyderabad's financial district, Amazon inaugurated its largest campus building anywhere worldwide, as a continuing reaffirmation of how India continues to be a key market as well as talent hub for Amazon, on 21 August 2019.

This is the only Amazon-owned campus outside the US and will house over 15,000 employees of its over 62,000-employee base in India. On behalf of the Hon'ble Chief Minister of Telangana, Shri Kalvakuntla Chandrashekhar Rao, the new campus building was inaugurated by Mr. Mohammed Mahmood Ali, MLC, Minister of Home, Prisons, Fire Services, Govt. of Telangana, in the presence of Amit Agarwal, SVP and Country Head, Amazon India and John Schoettler, VP, Global Real Estate and Facilities, Amazon.

With 15,000 work points across 1.8 million square feet in office space, built on 3 million square feet of construction area, this is Amazon's single largest building in the world in terms of total area. The infrastructure has been developed in adherence to Amazon's exacting standards, designed to facilitate inclusion of employees with special needs and support its diverse workforce.

Thousands of employees in the campus will benefit from Amazon's agile-based work environment, where they can select from a variety of workspaces to suit their needs. The facility features casual, collaborative workspaces, as well as private areas for concentration and confidentiality. Interfaith prayer rooms, mothers' room, quiet rooms, showers, helipad, and an all-day open cafeteria are designed to facilitate inclusion and diversity. Every detail is aimed at improving well-being and efficiency, from Destination Control Systems to manage



Photo: © Amazon

elevators that can move 972 people simultaneously, to 290 conference rooms and 3 scrum areas per floor to foster collaboration.

Amazon laid the foundation stone for the campus building on March 30, 2016. An average of 2,000 workers were on site every day for 39 months to construct the building, spending 18 million man-hours to create a world-class working environment. Sustainability is at the core of this building which has more than 300 trees dotting its grounds with three specimen trees aged over 200 years and has a 850,000-litre water recycling plant.

Scott Brownrigg completes Singapore data centre for global telecoms company

Singapore – A Scott Brownrigg-designed new data centre in Singapore for a confidential global telecom company has completed.

The six-floor facility is the telecom company's first overseas data centre, and the second in its Asia Pacific cloud network. The opening follows a groundbreaking event that took place just over a year ago.

Emerging from increased customer demand in Singapore and Asia Pacific, the centre is located at the Tai Seng Industrial Park in eastern Singapore. Repurposed from an existing warehouse and converted into a mission-critical facility, it houses more than 2,100 racks in a gross area of 17,480 square metres. It was designed in accordance with international Tier III+ TCDD and TCCF data centre standards to offer optimal capabilities, and scalability. The client's desire for a high efficiency building has also led to the centre receiving the IMDA-BCA's Green Mark Platinum certification, the highest available.

Meeting the demands of this brief required close collaboration with the engineers, DSCO Group, in order to optimise both effective space layout design and to plan the construction measures needed to meet completion within a tight timeframe of 11 months.

Departing from the traditional data centre designs, our design incorporates timeless 'modern box' proportions. We adopted the client's bold brand colours to dress the building, creating a visual landmark, fitting for their first overseas home.



Photo credit: Aaron Pocock Photography

Raymond Hoe, Director of Scott Brownrigg SEA said: "We are really pleased that this latest Data Centre has completed. It reinforces the high quality of client and work that Scott Brownrigg are doing in Singapore and supports our drive to push our Advanced Technology sector within the region."

This is the third data centre that Scott Brownrigg has completed within the region, following work in Singapore and China.

57th IFLA WORLD CONGRESS World Landscape Architects Summit 2020 to take place in Penang, Malaysia



Kuala Lumpur, Malaysia – Malaysia is proud to be the host for the 57th IFLA World Congress and IFLA2020 World Landscape Architects Summit. After the glorious success of 2007, this will be the second time Malaysia hosts the largest world stage for landscape architects. The 57th IFLA World Congress and

IFLA2020 World Landscape Architects Summit will be held in the city of Georgetown in Penang, located at the Northern region of Malaysia.

The attendees for IFLA2020 will be more than 1,000 delegates from America, Europe, Africa, Middle East and Asia Pacific. The profession of these delegates varies from landscape architects, urban planners, architects and professionals in built industry and also policy makers.

Theme: Future Tense

For the first time in the history of IFLA, the IFLA2020 World Landscape Architects Summit will play a leading role in forecasting future concerns and pursue landscape architecture-based solutions. It will be a platform for regional delegates to share forward thinking solutions, ideas and inspirations. This is to ensure that landscape architecture profession is ready to face challenges and demands of society and environment, now as well as the near future.

dormakaba for offices – Security for successful work with smart access solutions

Singapore – Success can be traced to a number of reasons. As for small businesses and start-ups, as well as for agencies and medium-sized businesses, authorities or global players. Every company has to think of tomorrow.

What is important: How do the employees work together? What kind of working environment is required? How do ideas and knowledge come to light?

Particularly in the office, personal relations play a key role. They don't need thick walls, the architecture sets the tone here: with flexible room concepts, barrier-free access and secured entrances. These all need to be aligned with reliable solutions, combined with comprehensive planning service from the first planning step right up to full-time operation.

Access solutions from dormakaba support smooth building operation, providing security and flexibility:



Property protection: increasing security through extended protective measures



Controlled vehicle access management: for passengers, delivery traffic, and car parking



Building security: controlling the main entrance, side entrances and the movement of people



High-security areas: increased protection of entrances and security-related areas



Indoor security: intelligent access management for employees and visitors



Hallways and passageways: securing of entrances with different security requirements



Controlled access to the employee office: through user-oriented authorisation



Design in offices: through design-oriented, flexible room systems



Versatile accessibility: varied portfolio of accessible solutions



Accessible WCs: automated door systems for increased convenience



Services: from planning, implementation installation as well as maintenance of access systems

Mapei makes a comeback at BEX Asia 2019 with innovative products for sustainable building

Singapore – Mapei made a comeback to BEX Asia 2019 after 10 years from its previous edition. This year, the company showcased innovative, updated product technologies and systems for the building industry.

Attesting to Mapei's expertise as an all-rounder building solutions provider, visitors saw a series of systems at Mapei's booth: from waterproofing, adhesives for tiles and vinyl flooring, protection of building concrete structures, PBU/PPVC, decorative flooring to hygienic wall paint. All these comprise of products and systems that are sustainable – products with low emission of VOC (volatile organic compounds), products that consider the health and safety for users and inhabitants (hygienic paints, radon and methane resistant waterproofing membrane), solutions that protect structures for longer service life leading to inevitably reduction of waste materials and lower consumption of materials and energy, supporting the ideology of sustainable building.

Solutions for large-format thin tiles

Mapei introduced Ultralite S2, a one-component, high-performance, cementitious adhesive, classified as C2E S2 according to EN 12004 standards. Ultralite S2 is specifically developed for large-sized thin tiles installation even though it can be used with any ceramic tiles. Its high buttering capacity reduces the risk of gaps in the adhesive on the backs of tiles, thus avoiding the risk of failure in tiles during application. It also has excellent capacity of absorbing deformations in the substrate and in the tiles. The characteristics of low viscosity make it easier and quicker to apply. The long open time and adjustment time makes laying operations easier. Ultralite S2 comes in 15kg bag, weighs lesser but can cover as much as a conventional 25kg cementitious adhesive of the same standards. This allows for easier handling and savings in transport costs. Furthermore, it has low emission of volatile organic compounds making it safe for the environment and user.

Complete waterproofing solutions from underground to roofs

All newly built structures or existing infrastructures will come into contact with water or be exposed to damp or moisture, causing structures to deteriorate overtime. Mapei has a complete range of waterproofing solutions that protect structures from deterioration and increases their service life. With proper deployment of solutions to the problems, maintenance costs can be reduced to the minimum.

For the area of roof waterproofing, Mapei launched Purtop Easy, a ready-to-use polyurethane membrane. Purtop Easy can be applied with just one single coat. It has high elasticity, excellent bond strength to substrates and is fully permeable. Besides being resistant to ponding water, it is also resistant to root penetration and UV rays.

For basement waterproofing, Mapei focused on Mapeproof FBT, a synthetic waterproofing membrane with non-woven



Photo: © Mapei

fabric backing. It can be used in conjunction with Mapeproof FBT Tape and Mapeproof SA Tape for waterproofing structures below ground level before casting concrete. This product can be fully bonded to concrete and overlaps 100 percent watertight. It is impermeable to radon and methane making it safe for inhabitants in the building. In addition, it is resistant to root penetration.

Galvanic cathodic protection for preventing corrosion on reinforcement structures

This technology utilises Mapeshield reactive zinc anodes that create a galvanic cell with the steel, which, as a result, is passivated and remains protected against attack from corrosion. It protects the reinforcement rods even if the concrete cover is insufficient and/or is cracked due to shrinkage or external stresses. Quick and simple installation with no maintenance required for the entire service life of anodes. This system is useful for protecting against corrosion on older structures and increases the durability of new structures.

Other systems: PPVC/PBU, decorative flooring, hygienic wall paint

An area was dedicated to prefabricated bathroom unit (PBU) and prefabricated prefinished volumetric construction (PPVC) whereby Mapei featured complete solutions for waterproofing, tiling, wood and vinyl finishes. In the area of decorative flooring, Mapei showcased Mapeflakes flooring system and Terrazzo system for internal environments requiring high aesthetic appeal. This can be complemented with Mapecoat ACT, enamel wall paints developed specifically for the food and beverage and health sector facilities, while adhering to international standards. It can also be applied in homes and places requiring high level of hygiene such as childcare centres. Paints that are clean and hygienic, resistant to bacteria and mould, for a healthy living environment.

Nirmal Kishnani to head LafargeHolcim Awards jury for Asia Pacific in 2020

Zurich, Switzerland – A jury of nine experts headed by Nirmal Kishnani, Professor of Architecture, School of Design & Environment, at the National University of Singapore, will evaluate entries in the 6th International LafargeHolcim Awards for the region of Asia Pacific. The Awards seek real projects as well as bold ideas that combine sustainable construction solutions with architectural excellence. The competition offers a total of USD 2 million in prize money and is open for entries until February 25, 2020.

In Asia Pacific, the jury includes Nirmal Kishnani (Head) as well as Chanasit Cholasuek, Co-Founder of stu/D/O Architects (Thailand); Christopher Lee, Co-Founder & Principal, Serie Architects (London, Mumbai, Singapore and Beijing); Nondita Correa Mehrotra, Principal at RMA Architects (India); Richard Hassell, Co-Founder of WOHA (Singapore); and Erwin Viray, Head of the Architecture Sustainable Design Pillar at the Singapore University of Technology & Design (Singapore).

The jury will be complemented by members of the Academic Committee of the LafargeHolcim Foundation Marilyne Andersen, Full Professor of Sustainable Construction Technologies, Swiss Federal Institute of Technology Lausanne (Switzerland) and Philippe Block, Professor of Architecture & Structure, Swiss Federal Institute of Technology Zurich (Switzerland), together with Sandra Boivin, R&D Support Director, LafargeHolcim Innovation Center (France).

Hosted by the National University of Singapore, an associated university of the LafargeHolcim Foundation, the jury will rank submissions using the five "target issues" for sustainable construction: covering innovation and transferability (progress), ethical standards and social inclusion (people), resource and environmental performance (planet), economic viability and compatibility (prosperity), and contextual and aesthetic impact (place).

The Awards competition is open for entries until February 25, 2020 and

Members of the Jury for Asia Pacific in 2020



Nirmal Kishnani (Head)



Marilyne Andersen



Philippe Block



Sandra Boivin



Chanasit Cholasuek



Nondita Correa Mehrotra



Richard Hassell



Christopher Lee



Erwin Viray

LafargeHolcim Awards

The world's most significant competition for sustainable design

Image: Courtesy of the LafargeHolcim Foundation for Sustainable Construction.

recognises projects and concepts from architecture, engineering, urban planning, materials science, construction technology, and related fields. A comprehensive "Step-by-step" guide explains the evaluation criteria and illustrates how to enter the competition at www.lafargeholcim-awards.org.

Since 2003, the LafargeHolcim Foundation advances the discourse on sustainable construction mainly through its Awards, the world's most significant competition for sustainable design. The Foundation is an initiative of LafargeHolcim, the global leader in building materials and solutions.

Unilever North America Headquarters receives LEED Platinum certification for sustainability

Englewood Cliffs, New Jersey, USA – The newly redeveloped Unilever North America headquarters building in Englewood Cliffs, N.J., has received LEED Platinum certification from the U.S. Green Building Council (USGBC), the highest level of LEED certification available for sustainable buildings.

As further recognition of the building as one of the most sustainable and technologically advanced redevelopments recently completed in the New York metropolitan area, Unilever's building has been named the LEED Commercial Project of the Year by

the USGBC in New Jersey. The project was also recognised by the New Jersey Business & Industry Associate New Good Neighbor Award.

Plans for the new corporate headquarters launched in 2014 in support of the Unilever Sustainable Living Plan, which calls for the consumer goods company to reduce its carbon footprint by 50 percent while doubling its business. The new building unified four office buildings from the Englewood Cliffs campus into a single, state-of-the-art workplace. The project was completed in 2018.

Workplace strategists and designers from Perkins+Will helped Unilever craft a future-proofed vision for its new headquarters – a concept and design known as “the Marketplace” – which entailed the creative retrofitting, renovation, and repositioning of the company's existing corporate campus.

The 325,000 square foot renovation included interiors, as well as the construction of an entry pavilion and common area that stitched together the open space between individual buildings to create an entirely new, enclosed structure. The efficient building achieved a 41 percent reduction in square footage, while being able to house more employees, which means less resources are needed to light and climate control the building.

The final building design incorporates smart technologies by EDGE that record data and automate the building's features and functions, including Internet of Things (IoT) systems that enable the building to learn from occupants' behaviors and remember their preferences.

The entire project was carried out with sustainability at the heart of the strategy. During the building phase, 75 percent of the construction materials were diverted from landfill. A shuttle service from New York City, Hoboken and Jersey City has supported a 40 percent reduction in individual cars.

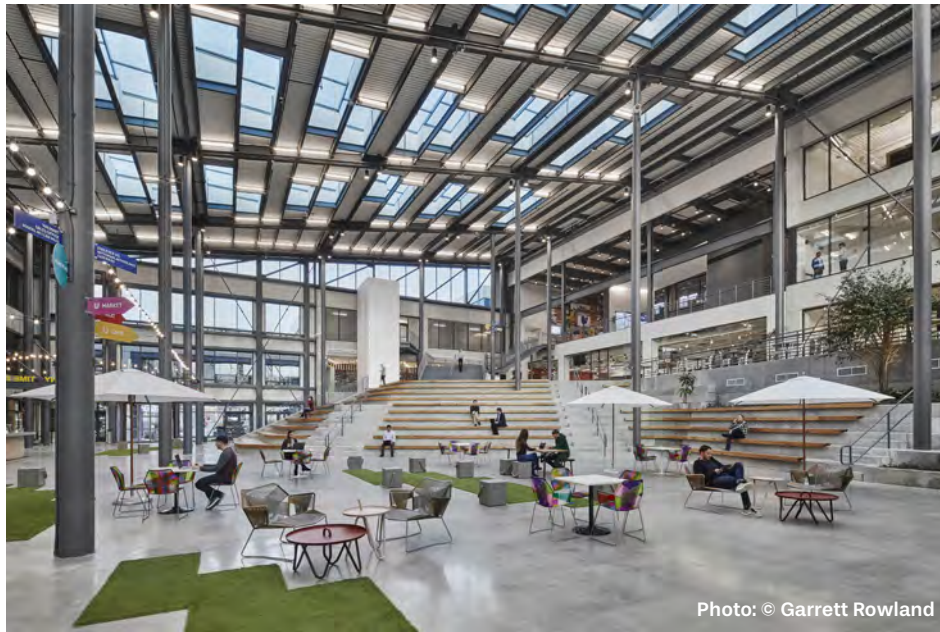


Photo: © Garrett Rowland

Hill International to help deliver Saudi Telecom Company's new master plan

Philadelphia, Pennsylvania, USA – Hill International has been awarded a contract to provide project management consulting services for the Saudi Telecom Company's (STC) redesigned master plan for their current King Abdul-Aziz Telecommunication Complex. The project involves developing infrastructure including roads, underground services networks, cables, landscape and hardscape, new buildings, and the renovation and facelift of existing buildings as per

the approved master plan design. The project consists of a headquarters building, an administration building, a multistory car park, multipurpose buildings, and recreation facilities comprising food and beverage outlets, health club and spa facilities, meeting facilities, retail, and a mosque. Hill will manage the design, supervision, and construction process to help ensure that STC and end-user requirements are implemented and achieved.

Architects announced for De Braak Sports and Education Campus in Helmond

Rotterdam, The Netherlands – Following a European tender procedure, the municipality of Helmond and the association of secondary schools, Ons Middelbaar Onderwijs (OMO), have selected the architects to design a multifunctional sports facility and outdoor activity area, to form part of the De Braak Campus in Helmond, the Netherlands.

The team of architects, consisting of MoederscheimMoonen Architects, FaulknerBrowns Architects and CULD, has been chosen for their distinctive design vision, in which buildings and surrounding landscape merge into one instantly recognisable and green icon.

De Braak Campus is a vibrant sports, education and health park in the heart of the city, being realised by the Municipality of Helmond, OMO, Helmond Sport, local amateur football clubs and a national physiotherapy practice. The proposed multifunctional facility will include: a stadium to be used as the home ground for Helmond Sport, school buildings for the education providers, a competition standard sports hall, gymnasiums, and a variety of other multifunctional spaces.



Photo: © MoederscheimMoonen Architects, FaulknerBrowns Architects and CULD.

The landscape design of the campus forms an important part of the assignment. In addition to the planned sports pitches, there will be space for individual sports and leisure activities, parking, and a school playground.

The architectural team has proposed making the campus as green as possible around the multifunctional sports facilities. It is important to have a great

deal of greenery in view of climate change and heat stress. This will enable the landscape to better absorb heavy downpours or long periods of heat or drought. This is why the building is integrated into the green landscape. The strong cohesion between buildings and landscape creates the possibility of, for example, connecting terraces with walking and jogging paths.

Beckenham Place Park reopens



Photo: © BDP

London, UK – Beckenham Place Park in south east London reopened to the public on 20 July 2019 as one of the capital's largest council owned parks after being used as a golf course for over 100 years. London Borough of Lewisham sought to improve the park's facilities and attract a larger and more diverse audience. BDP produced the design to reactivate the 96 hectare large open green space as a destination park creating a fully accessible facility for the whole community.

The project's key design aspects include improvement to the entrances and introduction of a site-wide footpath network, restoration of the external estate landscape to the mansion house, a pleasure ground including orchard and community planting beds and a play area and reinstatement of the original Georgian lake as the park's jewel in the crown. This 12,000 square metres facility, complete with a new jetty, is open to the public for wild swimming as well as other water based activities.

2019 Aga Khan Award winners unveiled

Kazan, Russia – Six projects have won the 2019 Aga Khan Award for Architecture. The announcement was made at a press conference on 29 August 2019 held in Kazan, Republic of Tatarstan. The winners, which will share US\$ 1 million between them, are:

Bahrain: Revitalisation of Muharraq

Bangladesh: Arcadia Education Project, in South Kanarchor

Palestine: Palestinian Museum, in Birzeit
Russian Federation: Public Spaces Development Programme in the Republic of Tatarstan

Senegal: Alioune Diop University Teaching and Research Unit, in Bambey

United Arab Emirates: Wasit Wetland Centre, in Sharjah



Revitalisation of Muharraq (Bahrain): Fakhro house was the luxury residence of Yousif Abdurrahman Fakhro, a successful timber and boat merchant at the height of the pearling activity. Architect: Bahrain Authority for Culture and Antiquities (BACA). Photo: © Aga Khan Trust for Culture / Cemal Emden (Photographer)

Revitalisation of Muharraq (Bahrain)

The Project, which highlights the World Heritage site's pearling history, was first initiated as a series of restoration and reuse projects. The project evolved into a comprehensive programme that aimed to re-balance the city's demographic makeup by creating public spaces, providing community and cultural venues, and improving the overall environment.

Arcadia Education Project (Bangladesh)

The Project in South Kanarchor is a modular structure that takes a novel approach to a riverine site that is often flooded for five months every year. Rather than disrupting the ecosystem to create a mound for building, the architect devised the solution of an amphibious structure that could sit on the ground or float on the water, depending on seasonal conditions.



Arcadia Education Project (Bangladesh): The architect designed this courtyard because it was important that during monsoon season children still had a play area. Photo: © Aga Khan Trust for Culture / Sandro di Carlo Darsa (Photographer)

Palestinian Museum (Palestine)

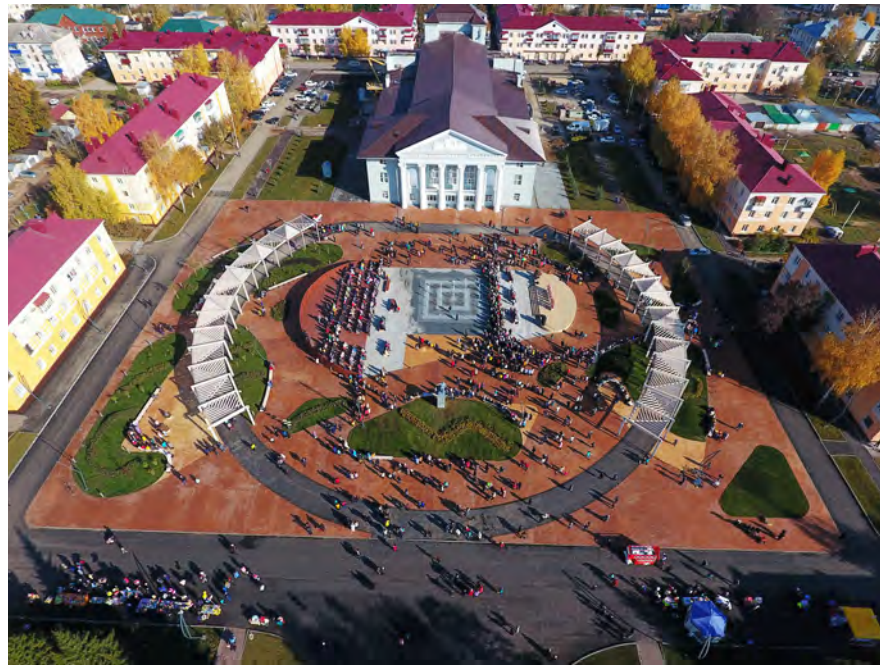
The Project in Birzeit, which crowns a terraced hill overlooking the Mediterranean, is the recipient of the LEED Gold certification because of its sustainable construction. The zigzagging forms of the Museum's architecture and hillside gardens are inspired by the surrounding agricultural terraces, stressing the link with the land and Palestinian heritage.



Palestinian Museum (Palestine): The Palestinian Museum's gardens were designed by Lara Zureikat, a Jordanian landscape architect. They are a fine example of a rich and diverse flora, comprising a wide range of native and non-native plants. Photo: © Aga Khan Trust for Culture / Cemal Emden (Photographer)

Public Spaces Development Programme (Russian Federation)

A programme in the Republic of Tatarstan that, to date, has improved 328 public spaces all over Tatarstan. The ambitious programme sought to counter the trend toward private ownership by refocusing priorities on quality public spaces for the people of Tatarstan. It has now become a model throughout the Russian Federation.



Public Spaces Development Programme (Russian Federation): Aerial view of the Central Square in Bavlly. Photo: © Lenar Gimaltudinov

Alioune Diop University Teaching and Research Unit (Senegal)

The Project in Bambey, where a scarcity of resources led to the use of bioclimatic strategies, includes a large double roof canopy and latticework that avoids solar radiation but allows air to flow through it. By employing familiar construction techniques and following sustainability principles, it succeeded in keeping costs and maintenance demands to a minimum, while still making a bold architectural statement.



Alioune Diop University Teaching and Research Unit (Senegal): The upper floor of the building can be accessed from the exterior, via a ramp and a staircase. Photo: © Aga Khan Trust for Culture / Chérif Tall (Photographer)

Wasit Wetland Centre (UAE)

Wasit Wetland Centre, in Sharjah, is a design that transformed a wasteland into a wetland and functioned as a catalyst for biodiversity and environmental education. While its indigenous ecosystem has been restored, it has also proven to be a popular place for visitors to appreciate and learn about their natural environment.



Wasit Wetland Centre (UAE): The remarkably simple building has two wings. The first one contains administrative and educational spaces, while the other accommodates the observation galleries. Photo: © X-Architects / Nelson Garrido (Photographer)

The Hyatt Foundation appoints new jury members for The Pritzker Architecture Prize

Chicago, Illinois, USA – The Pritzker Architecture Prize has appointed Barry Bergdoll and Deborah Berke as the newest members of the Pritzker Prize Jury. The 2020 edition of the Pritzker Prize marks the 42nd anniversary of the accolade, which is known internationally as architecture's highest honour.

"The jury is pleased indeed to add two new members, Deborah Berke and Barry Bergdoll," comments Stephen Breyer, Chair of the Pritzker Prize Jury.

"Together they bring to the jury experience in architectural practice, education, and history. Their presence will help us keep abreast of both historical and contemporary challenges that architecture is facing. Their broad knowledge of the field and their experienced judgment will prove invaluable," adds Stephen Breyer.

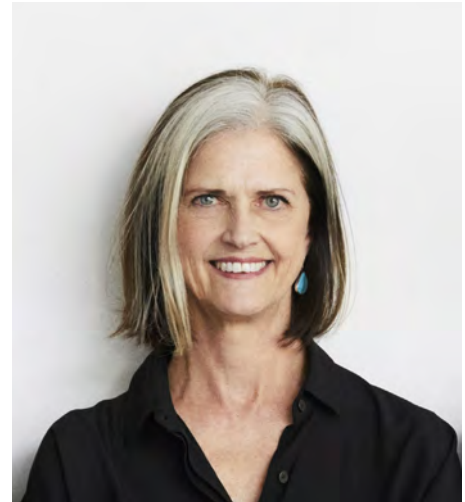
Mr Bergdoll is a Meyer Schapiro Professor of Art History and Archaeology at Columbia University and former curator of the Department of Architecture and Design at The Museum of Modern



Barry Bergdoll, photo by Robin Holland.

Art, New York. His proficient knowledge of buildings informs his critical analysis of contemporary architecture.

Deborah Berke is a practicing international architect, educator and Dean of the Yale School of Architecture. She is the recipient of a 2019 Medal of



Deborah Berke, photo by Winnie Au.

Honor from the AIA New York Chapter and the 2017 Sackler Center First Award, was the inaugural recipient of the 2012 Berkeley-Rupp Prize at the University of California at Berkley, and the recipient of a National Design Award from the Cooper-Hewitt Smithsonian Design Museum.

New report: the building and construction sector can reach net zero carbon emissions by 2050

London, UK – As part of the 10th annual World Green Building Week, the World Green Building Council (WorldGBC) issued a bold new vision for how buildings and infrastructure around the world can reach 40 percent less embodied carbon emissions by 2030, and achieve 100 percent net zero emissions buildings by 2050.

Together, building and construction are responsible for 39 percent of all carbon emissions in the world¹, with operational emissions (from energy used to heat, cool and light buildings) accounting for 28 percent. The remaining 11 percent comes from embodied carbon emissions, or 'upfront' carbon that is associated with materials and construction processes throughout the whole building lifecycle. WorldGBC's vision to fully decarbonise the sector requires eliminating both operational and embodied carbon emissions. The 'Bringing embodied carbon upfront' report proposes this ambitious goal alongside solutions to accelerate immediate action by the entire building and construction value chain. The vision is endorsed by

representatives from developers and construction companies, financial institutions, city networks and government, as well as industry representatives from concrete, steel and timber and many more including: HeidelbergCement, Skanska, Stora Enso, Google and the Finnish Government.

The report sets out to demystify the challenge of addressing embodied carbon emissions, through breaking down complex terminology and creating a common language to set a consensus-built definition for net zero embodied carbon. Embodied carbon emissions have been overlooked in the past but as shown by milestone research from the Intergovernmental Panel on Climate Change (IPCC) achieving drastic cuts in all carbon emissions over the next decade is critical to keeping global temperature rise to 1.5°C. Addressing upfront carbon is therefore crucial to fighting the climate crisis, as new construction is expected to double the world's building stock by 2060 causing an increase in the carbon emissions occurring right now. Therefore, the new report is calling for coordinated

action from across the sector to dramatically change the way buildings are designed, built, used and deconstructed.

WorldGBC presents a clear pathway of actions that designers, investors, manufacturers, government, NGOs and researchers across the whole value chain can take to accelerate decarbonisation, address current market barriers and, develop low carbon alternative solutions for market. However, the report warns that change will not happen unless there is a radical shift in how industry works together to enable a market transformation.

The transition towards mainstream net zero carbon standards requires immediate action to achieve greater awareness, innovation, improved processes to calculate, track and report embodied carbon, voluntary reduction targets from industry and roll out of new legislation at city, national and regional level. Approaches such as maximising the use of existing assets, promoting renovation instead of demolition and seeking new circular business models that reduce reliance on carbon intensive raw materials are also needed. To kick-start cross-sector collaboration, WorldGBC is calling for new national and sectoral roadmaps to be developed, such as those produced in

Finland, with strong support from industry and policymakers. Demonstrating the feasibility of achieving zero carbon goals, the report is supported by case studies of existing best practice across the whole breadth of the building industry.

Businesses involved in design and delivery have already committed to ambitious individual or national decarbonisation strategies. For example, Skanska, a major development and construction group is making strides in enabling projects to be evaluated for full lifecycle impacts.

Materials suppliers are also taking a leading role. HeidelbergCement has committed to developing carbon neutral products by 2050, and Dalmia Bharat Cement, one of India's leading cement manufacturers, is committed to becoming a carbon negative group by 2040.

Cities have also been instrumental in pushing for new innovations and approaches. Oslo, Norway has a commitment to fossil free construction sites. Vancouver, Canada has mandated that embodied carbon be reduced in new buildings by 40 percent by 2030, as part of its climate emergency response, demonstrating the type of regulatory frameworks that can drive market change.

Foster + Partners to design Shanghai Luye Lilan Hospital

London, UK – Foster + Partners to design Shanghai Luye Lilan Hospital Luye Medical, Cleveland Clinic and Foster + Partners are coming together to create a new state-of-the-art general medical hospital in Shanghai's New Hong Qiao International Medical Center (IMC) campus. The project will create the world's first 'Cleveland Clinic Connected' project to provide top-class healthcare facilities. The design challenges the traditional hospital model to provide value-based, patient-centric healthcare, that will enhance patient experience and improve recovery times, while attracting and retaining the best medical professionals from across China and the rest of the world.

Ben Scott, Partner, Foster + Partners said: "China's extraordinary growth story presents immense potential to push the boundaries of innovation in healthcare. The Shanghai Luye Lilan Hospital offers an opportunity to create a new world-leading blueprint for healthcare in the future, integrating latest technology and patient-centric care in a flexible facility that is immersed in nature."

There is a wealth of evidence to suggest that access and views to green spaces can improve recovery times and contribute to better clinical outcomes for patients, while providing a more comfortable workplace for medical staff. The building is surrounded by a rich landscape and flooded with natural light. Its comparative low-height offers a more intimate and domestic scale, allowing patients to feel at 'home' and better connected with the surrounding greenery whilst maximising interconnectivity for staff to create a cross-disciplinary working environment.



Photo: © Foster + Partners

A central circulation hub with a full-height open atrium makes wayfinding intuitive and reduces travel times for patients and staff. The building form lends itself to modular planning – the functions and spaces assigned to them are interchangeable, allowing for flexibility to adapt to future changes in the building layout and the integration of new technology.

The hospital will establish world-leading clinical specialities such as cardiology, urology, digestive disease, and oncology. The building design will promote collaboration between the different departments by integrating social spaces that encourage chance encounters and knowledge sharing between staff as well as providing dedicated areas for staff research and learning.

New Museum announces design of second building by OMA / Shohei Shigematsu and REM Koolhaas

New York, New York, USA – The New Museum has announced plans for its second building, designed by OMA / Shohei Shigematsu and Rem Koolhaas in collaboration with Cooper Robertson. This will be OMA's first public building in New York City.

The design complements and respects the integrity of the Museum's SANAA-designed flagship building and replaces the Museum's 50,000 square foot adjacent property at 231 Bowery, acquired in 2008. The new seven-storey, 60,000 square foot building will include three floors of galleries, doubling the Museum's exhibition space, along with additional space for the Museum's many community and education programs, a permanent home for its cultural incubator NEW INC, as well as increased public amenities and improved vertical circulation.

The Museum acquired the current building at 231 Bowery 11 years ago to provide additional space for expanded programs. Gradually over the past decade, the Museum has used the building to capacity for a range of activities including additional gallery space, NEW INC, office space for Rhizome and IdeasCity, studio space for artists,

archives, and back-of-house staging, prep, and storage.

Following extensive research and study of many options, including renovating the existing structure, the Museum concluded that new, ground-up construction would be the most efficient way, both spatially and financially, to fulfill its needs and civic purpose. The OMA design improves vertical circulation with the addition of an atrium stair, which will offer views of the surrounding neighbourhood. The stair and new entry align to the terminus of Prince Street, opening up the Museum to the city. The new building will also provide three additional elevators (two of which are dedicated to galleries) and more public spaces and services, including an expanded lobby and bookstore, an upper level forum for education and public programs connecting to the existing Sky Room, and a new 80-seat restaurant. The OMA building also provides space for a more efficient organisation of vital back of house, storage, and office space.

Adding a total of 10,096 square feet of exhibition space, the new galleries in the OMA building will connect with the SANAA building's galleries on three levels (second, third, and fourth floors),



Daytime view from Prince Street. Image credit: OMA/Bloomimages.de

with the ceiling heights aligning on each floor, doubling space for exhibitions and seamless horizontal connectivity between the buildings. The expanded spaces can be used singularly across the floor-plate to host larger exhibitions, or separately for diversity and curatorial freedom. The organisation of new galleries and programme spaces will support a stronger integration between exhibition programmes and education, research, and residencies that will help expand the Museum's audiences.

Beijing Daxing International Airport inaugurated

London, UK – Beijing Daxing International Airport is a new airport in the Daxing district 46 kilometres south of the city centre (20 minutes by express train).

Developed to alleviate congestion at the capital's existing airport, Beijing Daxing will be a major transport hub for the region with the world's fastest growing demand for international travel and is fully integrated within the country's expanding transport network. Initially serving 45 million passengers per year, Beijing Daxing will accommodate 72 million travellers by 2025 and is planned for further expansion to serve up to 100 million passengers and 4 million tonnes of cargo annually.

Beijing Daxing's 700,000 square metres passenger terminal includes an 80,000 square metres ground transportation centre

offering direct connections to Beijing, the national high-speed rail network and local train services, providing a catalyst for economic development in Tianjin and Hebei Province.

Recently assigned the airport code 'PKX' by the International Air Transport Association, Beijing Daxing sets a new standard in air transport services, serving the region's growing population within a compact and efficient passenger terminal that is adaptable for future growth.

Echoing principles within traditional Chinese architecture that organise interconnected spaces around a central courtyard, the terminal's design guides all passengers seamlessly through the relevant departure, arrival or transfer zones towards the grand courtyard at its centre – a multi-layered meeting space at the heart of the terminal.

Six flowing forms within the terminal's vaulted roof reach to the ground to support the structure and bring natural light within, directing all passengers towards the central courtyard. Natural light also enters the terminal via a network of linear skylights that provide an intuitive system of navigation throughout the building, guiding passengers to and from their departure gates. Structural spans of up to 100m create the terminal's generous public spaces and allow the highest degree of flexibility for any future reconfiguration.

The compact radial design of the terminal allows a maximum number of aircraft to be parked directly at the terminal with minimum distances from the centre of the building, providing exceptional convenience for passengers and flexibility in operations. 79 gates with airbridges connect directly to the terminal which can rapidly process the passengers of six full A380 aircraft simultaneously.

Five aircraft piers radiate directly from the terminal's main central court where all passenger services and amenities are located, enabling passengers to walk the comparatively short distances through the airport without the need for automated shuttle trains. As a result, the terminal's compact design minimises distances between check-in and gate, as well as connections between gates for transferring passengers. This radial configuration ensures the farthest boarding gate can be accessed in a walking time of less than 8 minutes.

Photovoltaic power generation is installed throughout the airport to provide a minimum capacity of at least 10MW. Beijing Daxing's centralised heating with waste heat recovery is supported by a composite ground-source heat pump system



Photography by Hufton+Crow

incorporating a concentrated energy supply area of nearly 2.5 million square metres.

The airport also implements rainwater collection and a water management system that employs the natural storage, natural permeation and natural purification of up to 2.8 million cubic metres of water in new wetlands, lakes and streams to prevent flooding and counter the summer 'heat island' effect on its local microclimate.

Construction begins on innovative office development designed by Goettsch Partners in Guangzhou

Chicago, Illinois, USA – Global architecture firm Goettsch Partners (GP) has announced the start of construction for Poly International Finance Center (Poly IFC), a large-scale office development designed by the firm, spanning two parcels in the Huadu central business district (CBD) in Guangzhou, China. Fronting a large civic plaza and straddling a linear park running through the Huadu CBD, the 273,300-square-



Photo: © Goettsch Partners

metre (2.94 million-square-foot) project, developed by Poly Real Estate Group, is anchored by four towers and features 12 independent office "villas" designed to provide an intimate scale that is unusual for a development of this size. The two southernmost towers create a gateway to the new CBD and provide an identifiable backdrop for the adjacent civic plaza. The office villas feature a variety of small footprints that step from two stories on the park side to four at the perimeter.

Terraces with landscaping occupy each step, extending the park and effectively integrating it visually into the buildings themselves. Pedestrian bridges on the second and third floors connect the office villas, facilitating social interactions both horizontally and vertically throughout the development, emphasizing an organic environment with a human focus.

Designed to achieve a China Green Building 2-Star rating, the development showcases direct connections to mass transit, timeless material selections, high-performance building systems, and abundant green roofs in addition to the optimised site organisation.

The Poly IFC is expected to begin occupancy sometime in 2021.

Hopkins Architects wins MK:U International Design Competition

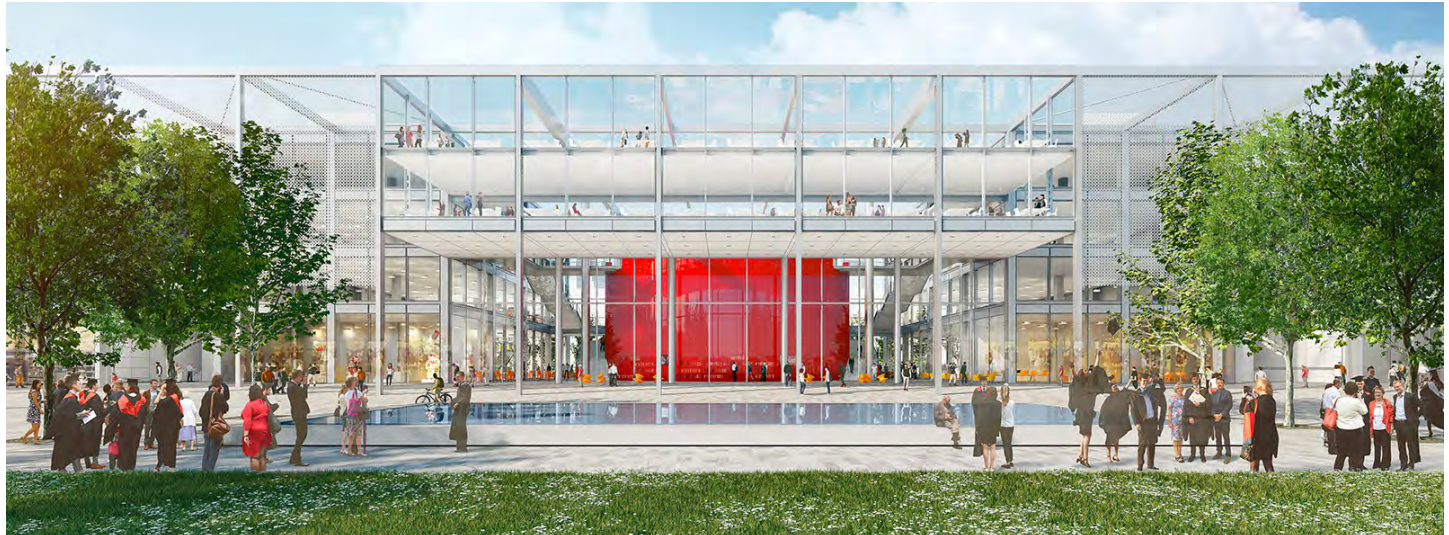


Photo: © Hopkins Architect

London, UK – Milton Keynes Council (MKC), Cranfield University and MK:U International Design Competition organisers, Malcolm Reading Consultants (MRC), announced on 30 July 2019 that the international team led by London based Hopkins Architects has won the MK:U International Design Competition.

The distinguished jury, which included Santander UK plc CEO Nathan Bostock, ITV's non-Executive Chairman Sir Peter Bazalgette, and Professor Dame Madeleine Atkins, President of Lucy Cavendish College, Cambridge, and was chaired by Chief Executive and Vice-Chancellor of Cranfield University, Professor Sir Peter Gregson, unanimously supported the winner decision.

The jurors were persuaded by the clarity and confidence of Hopkins Architects' competition concept design, as well as the team's collaborative approach to creating exceptional higher educational buildings internationally and the quality of their team which included, amongst others, leading engineers, Expedition Engineering, and landscape design

partners, GROSS.MAX.

The winning team described their competition scheme as an open quarter with a bold new urban frontage made up of a series of orthogonal academic pavilions, showcasing the university's activities in new technologies such as AI and robotics; their vision taking its inspiration from the famous infinity street at MIT in the US. The scheme both echoes the format of the original MK vision with calm super-rational buildings surrounded by greenery, while also envisaging a pedestrian- and bicycle-friendly future.

A new civic realm for the proposed new university quarter includes a graduation lawn and formal water feature. The forum, the scheme's centrepiece, is immediately recognisable with an eye-catching drum-shaped red lecture theatre within the glass entrance lobby, reminiscent of a giant friendship bead, which is welcoming to students, visitors and locals.

The competition was organised by Malcolm Reading Consultants.

Do you have news?
Don't keep it to yourself....

Share it with us!
Email seab@tradelinkmedia.com.sg

The advertisement features a background of a computer keyboard. A prominent blue key with the word "NEWS" in white capital letters is highlighted. The text is overlaid on the keyboard, with the main headline in white and the contact information in blue and white.

HOK and SAP release report on designing the Esports Venue of the Future

London, UK – Global design firm HOK and software company SAP have published a new research report exploring the future of e-sports venues.

Over 450 million people will view an e-sports event in 2019, making it one of the fastest-growing sectors in the global sports and entertainment industry.

"Developing the Esports Arenas of the Future" explores the factors driving this explosive growth, the unique audience and how the e-sports venue of tomorrow will look very different than traditional sports facilities.

Key design features explored in the report include:

- A non-traditional seating bowl
- An immersive environment
- Reimagined geometries and spatial organization
- More intimacy
- A blending of technology with the built environment
- Hospitality-driven experiences

"Purpose-built venues have historically had a significant impact in establishing a sport in a culture and community," said Nuno Guerreiro, an architect at HOK and co-author of the report. "Because of the length of these events and technological requirements, e-sports have a unique audience seeking more connected, hands-on experiences. Architects and designers have an opportunity to rethink every aspect of the traditional sports and entertainment environment – from a building's location and form down to the seat," added Mr Guerreiro.

Guerreiro collaborated with Carlos de la Barrera, a senior designer at HOK, and Federico Winer, head of EMEA for



Esports Seating Bowl. Photo: © HOK and SAP

Entertainment, to author the report.

"The esports industry is growing faster than any other entertainment segment, with forecasted growth of 35 percent year-over-year for the next five years. We see endless opportunities for SAP's technology solutions to influence and impact the experience for the whole value chain, from publishers to organisers to arenas," said Federico Winer, Head of Entertainment Industries at SAP. "We are in the era of intelligent enterprises and corporations need to transform data into insights, providing optimal experiences for internal and external stakeholders. These proposed solutions for the future of the esports venues showcase the beginning of how advanced technology, paired with creative built environment solutions, can inspire innovation and digital transformation," added Mr Winer.

Element signs contract with National Heritage Board of Singapore for architectural and structural testing

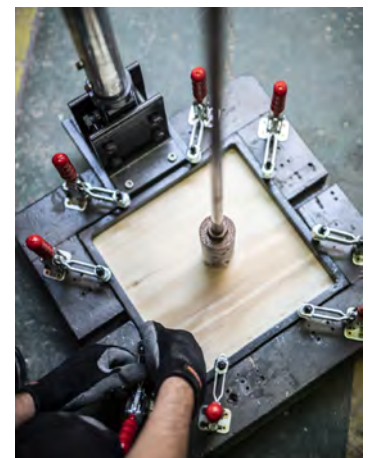
London, UK – Element Materials Technology (Element) has signed a contract with the National Heritage Board of Singapore for architectural and structural testing in five museums.

The work will be undertaken by Element's Admaterials laboratory and will involve the extraction and laboratory-based testing of samples of plaster/render, brick, mortar joint, concrete, timber and paint from each museum.

The testing will be carried out following guidelines issued by a number of technical bodies including: the International Council on Monuments and Sites (ICOMOC);

International Scientific Committee for the Analysis, Restoration of Structures of Architectural Heritage (ISCARSAH) and other certification. Investment has been made by the team in equipment for establishing the firing degree of masonry using X-ray Diffraction and Differential Scanning Calorimetry.

The museums within the testing remit are: Asian Civilizations Museum (ACM); National Museum of Singapore (NMS); Sun Yat Sen Nanyang Memorial Hall (SYS); Malay Heritage Centre (MHC); The Peranakan Museum (TPM); and structural investigation works for the Heritage Conservation Centre (HCC).



SGBC celebrates 10th anniversary



Dr. Amy Khor, Senior Minister of State for the Environment and Water Resources & Health. Photo: © SGBC



Dr. Ho Nyok Yong, President of the Singapore Green Building Council. Photo: © SGBC

Singapore – The Singapore Green Building (SGBC) celebrated its 10th anniversary on September 5, 2019 at the Orchard Road in the presence of all its past presidents, board members and industry partners. Dr Amy Khor, Senior Minister of State for the Environment and Water Resources & Health, was invited as guest of honour.

21 winners across the three award categories (individuals, organisations, building projects) under the 3rd edition of the biennial SGBC-BCA Sustainability Leadership Awards were honoured at the event.

Established in 2009 with the mandate to certify green building products and materials for Singapore's growing green building and infrastructure portfolio, SGBC has grown into a national enabler of sustainability for the entire built environment over the past decade. From a founding membership base of 129 building and construction sector organisations in 2009, SGBC now counts almost 500 organisations from the built environment as well as organisations not immediately involved in building and construction.

As one of SGBC's primary programmes, the Singapore Green Building Product (SGBP) certification scheme is the only certification programme in the country dedicated to the assessment of green building products and materials. Since its establishment in 2010, the SGBP has since certified more than 3500 building products from more than 500 companies.

As an expansion of SGBC's scope in its 10th Anniversary, SGBC has taken over the administration and management of Singapore's green building professionals under the SGBC Green Mark Professional Qualification Scheme. Refreshed from the BCA Green Mark Specialist Scheme previously

maintained by the Building and Construction Authority (BCA), the new programme aims to upskill competencies and expand the knowledge of the green building professional community which counts more than 1,200 individuals.

For the next phase, SGBC will be focusing on two main areas: reducing carbon emissions and intensifying public outreach. The built environment is responsible for 40 percent of global carbon emissions, with embodied carbon emissions being especially critical. The carbon dioxide equivalent of emissions associated with the full supply chain of all materials and systems put into any built environment project, embodied carbon is different from operational carbon in that the latter can be improved over the lifetime of a building. If embodied carbon emissions are not addressed before the building project moves past the design stage, there is no way for building owners to reclaim lost carbon savings once the building is constructed.

SGBC is able to help the industry navigate through embodied carbon reductions through its certification programmes, primarily through the SGBP certification scheme, which necessitates a carbon footprint report for high-impact building products such as concrete, flooring and paints.

"As our built environment is designed and constructed to be more energy-efficient, embodied carbon emissions will become more significant and important," said Dr. Ho Nyok Yong, President of the SGBC. "We plan to roll out a series of programmes designed to raise awareness of embodied emissions and also facilitate the industry's own carbon reduction efforts by delivering implementation activities to help building owners reduce portfolio emissions," added Dr. Ho Nyok Yong.



SGBC celebrated its 10th anniversary with a cake cutting ceremony in the presence of Dr. Amy Khor, past presidents of SGBC and industry partners.

List of award winners

INDIVIDUALS

Green Advocate

Dr. Pang Chin Hong, Vice President, Group Corporate Planning, Frasers Property Limited

Young Green Advocate

- (1) Ms Wenda Lew, General Manager, Comfort Management Pte Ltd
- (2) Dr. Tay En Rong, Stephen, Senior Lecturer, National University of Singapore

Green Architect

Ar. Theodore EC Chan, Senior Director, CIAP Architects Pte Ltd

Young Green Architect

Ar. Alina Yeo Hwee Hua, Director, WOHA Architects Pte Ltd

Green Engineer

Er. Yong Siew Onn, Director, DP Sustainable Design

Young Green Engineer

Er. Pang Pei Song, Associate, WSP Consultancy Pte Ltd

Green Facilities Manager – Commendation

- (1) Mr Kenny Low, Head of Department, Mechanical & Electrical, International Plaza
- (2) Mr Kelvin Goh, Head (Group Operations & Projects), Mercatus Co-Operative Limited
- (3) Mr James Ng, Deputy Director, Business Strategy & Development, SMM Pte Ltd

Young Green Facilities Manager

Ms Lee Zhenyi, Deputy Director, Building Engineering Solutions, C&W Services (S) Pte Ltd

Green Innovator

- (1) Dr. Chai Kok Soon, Technology Director, Kaer Pte Ltd
- (2) Dr. Li Fuyun, Head, Engineering, Innosparks Pte Ltd

ORGANISATIONS

Business Leadership in Sustainability

- (1) DBS Bank Ltd

Leadership for Green Building Product

- (1) Pan-United Corporation Ltd
- (2) Uniseal Creative Solutions Pte Ltd

BUILDING PROJECTS

Leadership in Sustainable Performance & Design – Commercial

- (1) PARKROYAL on Pickering
- (2) Schneider Electric East Asia & Japan Headquarters

Leadership in Sustainable Performance & Design – Institutional

- (1) Kampung Admiralty
- (2) Wisma Geylang Serai

Leadership in Sustainable Performance & Design – Residential

Coco Palms

EmiratesGBC hosts WELL Building Standard workshop to advance health and well-being in buildings

Dubai, UAE – Emirates Green Building Council (EmiratesGBC), the independent forum aimed at conserving the environment by strengthening and promoting green building practices, organised a WELL Building Standard workshop in Dubai's Time Oak Hotel & Suites under the theme, 'WELL Today and Tomorrow: Scaling Health Happiness + Well-being for Strategic Impact across Organisations.'

The workshop was organised with the International WELL Building Institute™ (IWBI™) to shed more light on how design, operations and behaviours within the building space can be optimised to improve the health and well-being of the people inside buildings. IWBI delivers the WELL Building Standard, a leading global rating system and the first to be focused exclusively on the ways that buildings, and everything in them, can improve comfort, drive better choices, and generally enhance, not compromise, health and wellness.

At the workshop, experts from IWBI™ and EmiratesGBC, as well as subject-matter experts, offered insights on the WELL Building Standard through a series of new case studies demonstrating the

impact of WELL.

The WELL Portfolio programme, which enables organisations to scale their efforts related to health and well-being across multiple buildings or spaces within them, was introduced at the event. Launched in July and rooted in the impactful strategies contained within WELL v2, WELL Portfolio is designed to maximise the positive outcomes related to human health and well-being along with the value of buildings. Experiences of UAE organisations and properties that focus on health and wellness were also presented at the workshop followed by Q&A from the audience. Speakers from IWBI included Kate Rube, WELL Faculty and Vice President of IWBI, and Ann Marie Aguilar, WELL Faculty and Director of Operations – EMEA, IWBI. Kate drew on her expertise in active design, urban planning, and policymaking at the discussion, while Ann-Marie highlighted the practical aspects of how business development and technical teams can work towards WELL Certification. Subject matter experts who contributed to the panel discussion included: Farah Yassine, Principal Consultant – Sustainable Resource Management, WSP; Katherine

Bruce, Sustainability Consultant, AESG; and Mahesh Kamath, Projects Manager at Works Interiors LLC.

Saeed Al Abbar, Chairman of EmiratesGBC, said: "The value of buildings where people thrive and prosper is integrally linked to the wellness of its residents. Sustainable living also incorporates this important aspect – where buildings and spaces are designed and maintained to promote the welfare of the people. As the UAE focuses on driving green built environments to achieve its vision for sustainable development, incorporating standards for well-being adds further value for the building and its occupants. Our workshop on WELL was specifically designed to highlight the importance of how we can all work together to improve global health through the design of the places where people live and work."

Ann Marie Aguilar of IWBI™ added: "As one of the first WELL workshops in the Middle East, we are extremely pleased to collaborate with EmiratesGBC to communicate the importance of advancing health and well-being in buildings across the region. Our goal, especially through WELL Portfolio, is to encourage organisations to prioritise people's well-being, as well as to achieve higher efficiencies by applying proven wellness strategies at scale. Through this workshop, we have underlined the long-term value that the WELL Building Standard brings to urban projects and to the community."

The workshop was supported by WSP and was attended by EmiratesGBC members and government partners as well as other industry professionals. Farah Yassine of WSP in the Middle East, who also represents EmiratesGBC on the organisation's Board of Directors, was a panellist at the event. Drawing on her experience and knowledge of social sustainability, Farah shared insights on how organisations in the region can benefit from integrating health and wellbeing in the built environment and solutions for achieving positive change.



Photo: © Emirates Green Building Council

**4-7
FEB**

World of Concrete 2020

Las Vegas Convention Center
Las Vegas, Nevada, USA

F: +1 708 344 4444

E: contactus@worldofconcrete.com

W: www.worldofconcrete.com

**24-26
FEB**

R+T Asia 2020

Shanghai New International
Exhibition Centre, Shanghai, China

T: +86 21 6195 6088

F: +86 21 6195 6099

E: Rtasia@vnuexhibitions.com.cn

W: <http://rtasia.org/>

**5-7
MAR**

Windoore Expo China 2020

Poly World Trade Center (PWTC)
& Nan Fung International
Convention & Exhibition Center (NICEC)
Guangzhou, China

T: +86 20 22315830

E: wdos@informa.com

W: www.windoorexpo.com/en/default.aspx

**11-13
MAR**

BuildTech Asia 2020

Singapore Expo
Singapore

T: +65 6319 4021

F: +65 6319 6140

E: buildtechasia@sph.com.sg

W: www.buildtechasia.com

**16-19
MAR**

**Xiamen International
Stone Fair 2020**

Xiamen International Conference
& Exhibition Center
Xiamen, China

T: +86 592 5959 616

F: +86 592 5959 615

E: info@stonefair.org.cn

W: www.stonefair.org.cn

**18-22
MAR**

WORLDBEX 2020

Philippine International Convention Center,
World Trade Center Metro Manila and
SMX Convention Center
Manila, Philippines

T: +63 2 656 9239

F: +63 2 477 1899

E: inquire@worldbexevents.com

W: www.worldbex.com

**19-20
MAR**

Sydney Build 2020

ICC Sydney,
Australia

T: +61 2 800 67557

E: marketing@sydneybuildexpo.com

W: www.sydneybuildexpo.com

**23-25
JUN**

**Futurebuild Southeast Asia
(SEA) Expo**

Malaysia International Trade And Exhibition
Centre (MITEC)

Kuala Lumpur, Malaysia

T: +60 3 9771 2688

F: +60 3 9771 2799

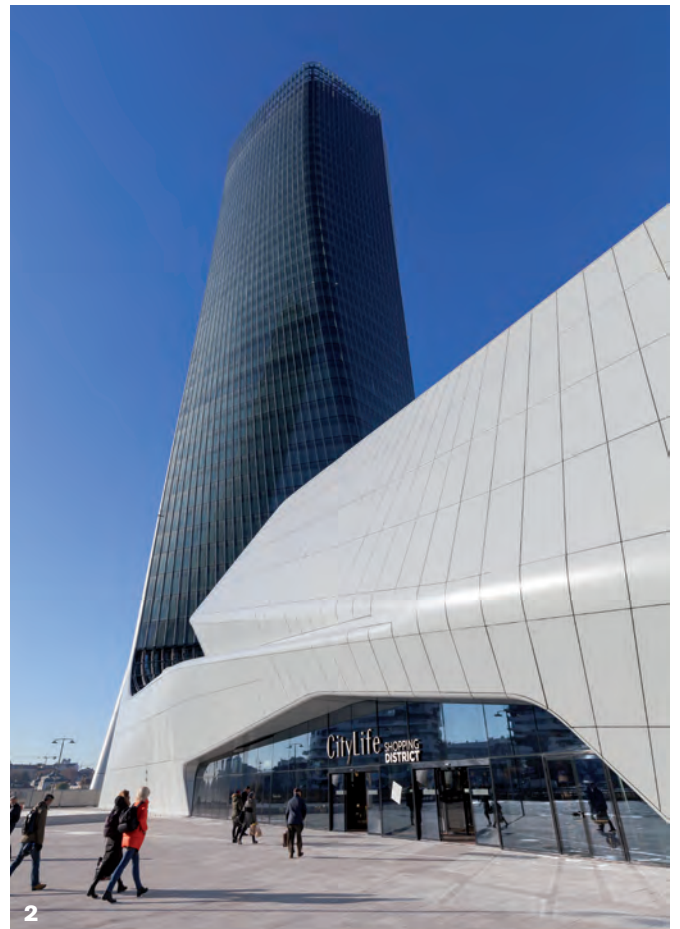
E: ecobuild-sea@ubm.com

W: www.ecobuildsea.com



CityLife Shopping District

The mall, designed by Zaha Hadid, also includes a cinema and plenty of showrooms. Mapei was involved in this iconic project.



Photos 1 & 2: The entrance to the CityLife Shopping District and the Generali Tower, both designed by Zaha Hadid.

The CityLife Shopping District, inaugurated in Milan, during December 2017, got off on the right foot, also due to the nearby catchment area, which includes the more than 5,000 employees of the Allianz and Generali Towers. And in three years' time, forecasts indicate there will be around seven million visitors per year. A great result considering the shopping centre, the penultimate phase of the CityLife real-estate project – the last piece being the tower designed by Daniel Libeskind scheduled to be completed in 2019 – will have to do battle with the competition of nearby malls such as the "Centro" shopping centre of Arese (see Realtà Mapei International no. 59).

With a floor space of 32,000 square metres, the CityLife Shopping District is now the largest urban shopping centre in Italy. Inside the centre there are



The floor in the Huawei store was realised with ULTRATOP.

around 100 different brands offering an extensive range of goods, some of which made their debut in Italy, including leading fashion brands, a mark of prestige for the centre compared with its rivals, restaurants, and an area dedicated to other services, such as a cinema.

The mall was designed by the architect

Zaha Hadid, who used bamboo to dress floor-to-ceiling columns to make them look like trees.

One of the new names that appears for the first time in Italy, and also in Europe, is the Chinese telephony brand Huawei, which will be fitted out with cutting-edge, eco-sustainable systems.



LVT flooring was installed in the CityLifeAnteo cinema with ULTRABOND ECO V4 SP adhesive.



The floor in the Adidas showroom was realised with ULTRATOP with a special "aged" effect.

To make the floors, Mapei Technical Services recommended using ULTRATOP ultra-fast setting, self-levelling mortar. The first step was to prime the surface with PRIMER SN epoxy pre-filled primer. ULTRATOP, in its light grey colour shade, was then applied in a layer with an average thickness of 2 cm. To help the floor maintain its colour over the years, it was then protected with a coat of MAPEFLOOR FINISH 58 W, two-component polyurethane finish in water dispersion.

The floor in the Adidas showroom was also made from ULTRATOP to obtain floors with a very attractive finish which is also particularly resistant to abrasion. The colour chosen by the designers was light grey with a ROC (Rugged Old Concrete) effect that makes it look like used concrete, with worn areas and marks typical of floors found in old,

reconverted buildings.

MAPEFLOOR FINISH 630 protective acrylic filming agent was used to complete the final finish providing an anti-dust treatment.

The CityLife Shopping District also has a cinema with seven screens and seating for 1,200 cinemagoers. Each screen has been named after one of the historic Milan cinemas that have been closed down over the years: Ariston, Aurora, Capitol, Corallo, Maestoso, Mignon and Zenit. In each of the screens areas, before installing vinyl floor covering, the substrates were smoothed to make them perfectly flat with PLANIPATCH ultra-fast setting, thixotropic finishing mortar with very low emission of volatile organic compounds (VOC). To improve their resistance to abrasion, LIVIGUM synthetic resin-based latex in water dispersion was added to the mix.

To bond the wood-effect LVT (Luxury Vinyl Tile) flooring, Mapei Technical Services recommended using eco-sustainable ULTRABOND ECO V4 SP, a universal adhesive in water dispersion with very low emission of VOC.

Article source: Realtà Mapei International no. 69/2018

For more information, email mapei@mapei.com.sg.

Mapei Products

Preparing the substrates: Livigum, Planipatch, Primer SN

Building cementitious floors: Mapefloor Finish 58 W, Mapefloor Finish 630, Ultratop (ROC, Light Grey)

Installing vinyl floors: Ultrabond Eco V4 SP



ULTRATOP

PROJECT DATA

Project Name: CityLife Shopping District

Location: Milan, Italy

Period of Construction: 2016-2017

Period of the Intervention: 2016-2017

Intervention by Mapei: Supplying products for realising cementitious floors, smoothing the substrates and installing vinyl floors

Design: Zaha Hadid Architects

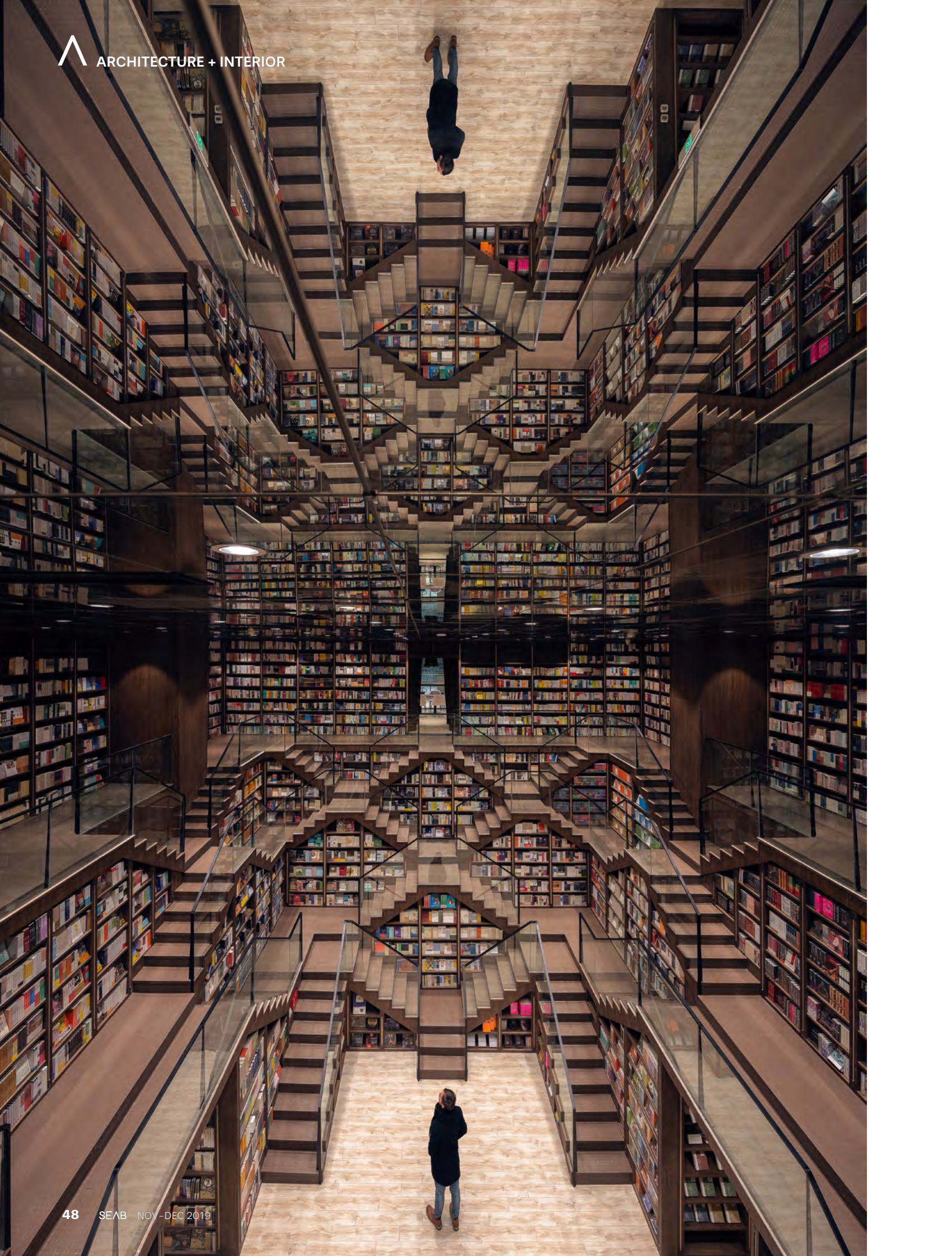
Clients: CityLife, Retail HW, Adidas

Main Contractor: CMB

Installation Companies: Cudicini, Gianni Cortez, VSA-Vissa

Mapei Coordinator: Andrea Siboni, Antonio Salomone, Alberto Arosio, Mapei SpA (Italy)

Photos: © Mapei



Chongqing Zhongshuge Bookstore

X+Living has used Chongqing's mountainous landform features to create a unique interior for the bookstore.

As one of the world's largest inland city of mountains and rivers, Chongqing is a city full of surprises and wonderful and charming corners. Since ancient times, its landscape and numerous historical sites have attracted many ancient writers and calligraphers. Until today, Chongqing is still a city of attraction to everyone.

Located on the 3rd and 4th floors of Zodi Plaza, Yangjiaping, the Chongqing Zhongshuge greets visitors with a simple glass facade covered with text. Once inside, scattered "lampshade-shaped bookshelves" are found throughout the dark brown lobby. Visitors can feel as if they were in a bright and warm private study when they read in the warm light projected from inside the lampshades.

On one corner of the lampshade-shaped lobby is a quiet reading corridor, with bookshelves extending down the hallway. The bookshelves reflect on the ground and form a tunnel of

books that beckons visitors to follow it deeper into the space and knowledge. On the other corner of the lobby is the children's reading room, where the bookshelves are built colorful with drawn Chongqing's landscape, buildings and transportation. Children may feel like in the charming Chongqing while reading in this room.

Further down the corridor and the children's reading room is the main study, a "ladder hall" where the stair double as bookshelves and the mirrored ceiling overhead doubles the size of the already astonishing room. The space allows visitors to rest on the shelved steps and be immersed in books and thoughts.

Up to the 4th floor from the "ladder hall" is a leisure area, where visitors can enjoy the aroma of coffee or a taste of good tea and immerse themselves into a tranquil world of different stories by reading. The "lampshade-shaped bookshelves"







“ The original design idea is to create a surreal bookstore that combines local characteristics, and the shape of mountain steps was designed referring to Chongqing’s mountainous landform feature.

Li Xiang, Chief Designer, X+Living

around create scattered booths at this area, in which visitors may gather with friends to have fun reading and enjoy their leisure time. Connected to the leisure area is the extensive reading hall, where works of great minds are listed and visitors are able to broaden their eyes and enrich their spiritual world.

Zhongshuge Bookstore is a good place to read books, understand one’s life and meet others. It is hoped that visitors to it can not only read good and new books, but also meet friends of the same interests.

PROJECT DATA

Project Name: Chongqing Zhongshuge Bookstore

Location: Chongqing, southwest China

Client: Shanghai Zhongshu Industrial Limited Company

Architect Firm: X+Living

Size: 1,300 square metres

Completion: 2019

Photos: © Shao Feng

Yorkville – The Ring



Yorkville – The Ring in Chongqing is an innovative retail development featuring one of the largest indoor botanic gardens in China.



Lead8, the international firm of Architects, Masterplanners, Interior and Graphic Designers, has announced its appointment to Hongkong Land's recently unveiled 'Yorkville – The Ring' in Chongqing – an innovative retail development possessing one of the largest indoor botanic gardens in China.

The commercial development is the inaugural project in Hongkong Land's new retail series 'The Ring'. This will also be the developer's first wholly-owned commercial development in Southwestern China. Lead8 is delivering the Interior Design for the future development.

"We are incredibly proud to be working with the prestigious Hongkong Land team to conceive their future retail series. With half of all Fortune 500 companies now operating in Chongqing, the city is primed for a new innovative retail destination to excite its ever discerning population. We believe our design will do just that," said Chris Lohan, Co Founder & Executive Director at Lead8.

Located in the Jinzhou Business District, within the Liangjiang New Area, Yorkville – The Ring is being developed in the residential centre of the city. The retail-led destination is situated next to Yorkville, the high-end residential development also by Hongkong Land, which borders the Zhaomushan Forest Park.

The scheme occupies a total of 430,000 square metres with approximately 154,000 square metres dedicated to the seven-level mall, 14,000 square metres to the retail street, 111,000 square metres to the super grade A office building and 6,000 square metres to the indoor botanic garden. Direct connections to Chongqing Metro Line 5 (completed) and Line 15 (still in planning), will offer convenient access across the entire city.

The mall is set to introduce new retail experiences for the industry and Chongqing. The development comes to life with a 42-metre-tall botanic garden, sports and culture themed interactive spaces, and a creative tenant mix, together providing first-of-their-kind attractions to the city.

Allowing visitors to feel as though they have walked into a rainforest, the indoor botanic garden will feature three distinct themes – the Soul Tree, the Aerial Forest and the Riverside Hills. The garden has a 24-metre airborne waterfall that will nourish over 70,000 plants of over 300 different species. Speciality activity hubs such as the 'Free+' dynamic sporting facility and 'Open Lab', a calm space for reading and gathering, help meet the diverse demands of a wide consumer profile.

The inaugural development is due to complete by the end of 2020 with Hongkong Land planning to bring 'The Ring' series to other cities across China in future.



“ The concept for ‘The Ring’ series pays respect to unique local cultures and brings new vitality to their host cities. Our approach to the design of the interior environment of this truly exciting and sector-leading development has mirrored this aim. The space unites people with nature, people with people and people with technology, to create an intelligent, dynamic and living and breathing retail experience.

Ada Ng, Regional Director, Lead8



PROJECT DATA

Project Name: Yorkville – The Ring
Location: Chongqing, China
Client: Hongkong Land
Interior Designer: Lead8
Executive Architect: PH Alpha Design
Overall Gross Floor Area: 430,000 square metres
Retail Gross Floor Area: 154,500 square metres
Completion: End of 2020
Photos: © Lead8 International Limited

Yoho Mall Chow Tai Fook Experience Shop

One Plus Partnership adopted the concept of gift box in the interior design of the shop.

Jewelry is often associated with celebrations. It is one of the most popular gifts for newborn, birthday, wedding, festivals, and many key occasions in one's life. The designers adopted the concept of giftbox in the interior design of the shop, illustrating the sense of celebration and joy regardless of presenting or receiving jewelry as a gift. As this store signifies the launch of the brand's Young Line, pastel colour tone is adopted to create a young and energetic atmosphere.

Overthrowing the cliché of local traditional jewelry shop's image of gold and shiny, this experience shop is designed with numerous identical gift boxes of various colours and materials. A total of 1070 gift boxes are giftboxes of various colours and materials. A total of 1070 giftboxes are installed, extending from the wall, ceiling, cashier, workshop table, to the groups of display stands in the center of the shop. Upon entering the shop, the customers would feel as if they are standing among piles of gifts, indulging in a space of young, joy and fun.

Another highlight of this experience shop is the unconventional layout that creates a close and interactive space between the staff and customers. Unlike the classic one on one consultation across a long glass display table, the display cabinets are set on both sides and in the centre, greatly enhancing the mobility and creating a comfortable shopping experience. The display cabinets are made of glass boxes, in which some are slightly extended out from the two sides along the wall that serve as mini consultation tables. In the centre area, various groups of display cabinets are surrounded by colourful sitting cubes in a causal manner, allowing the customers to sit down and take time in choosing their jewelry. The sitting cubes are made with different fabrics, patterns and shades of pink to resemble the magnificent giftwraps.

Digital screens in the shop display graphics are related to the products, establishing a modern and cyber theme while enabling customers to find out more about the products. Splice screens are also installed at the entrance, showing motion graphics that demonstrate the design theme of the store.

The carpet used in the shop is customised in which the abbreviations of the brand's name, CTF, are abstractly printed on the carpet in different colours. The eye-catching carpet is very uplifting, and matches with the colour scheme of the shop.







周大福
CHOW TAI FOOK



The shop displays tools for jewelry production, sketches and prototypes, which are all specifically chosen by the designers. These displays not only decorate the shop, but also create a platform for the staff to explain to customers the production procedures behind every piece of jewelry, enhancing the personal touch in their service to customers.

While choosing a gift for themselves or their loved ones, the customers are presented with a gift from Chow Tai Fook – reliable and heartwarming service in a joyous environment.

PROJECT DATA

Project Name: Yoho Mall Chow Tai Fook Experience Shop
Location: Hong Kong
Client: Chow Thai Fook
Architect Firm: One Plus Partnership
Size: 222 square metres
Completion: 2017
Photos: © Jonathan Leijonhufvud & Ajax Law



Jewelry is often associated with celebrations, which is signified through the theme of giftbox in this design. 1070 giftboxes of various colours and materials are installed, surrounding customers like piles of gifts. Unconventional shop layout and specially designed display cabinets enable a close interaction between sales and customers.



Virginia Lung (left) and Ajax Law, Design Directors, One Plus Partnership

Sounds Hannam Aesop Signature Store



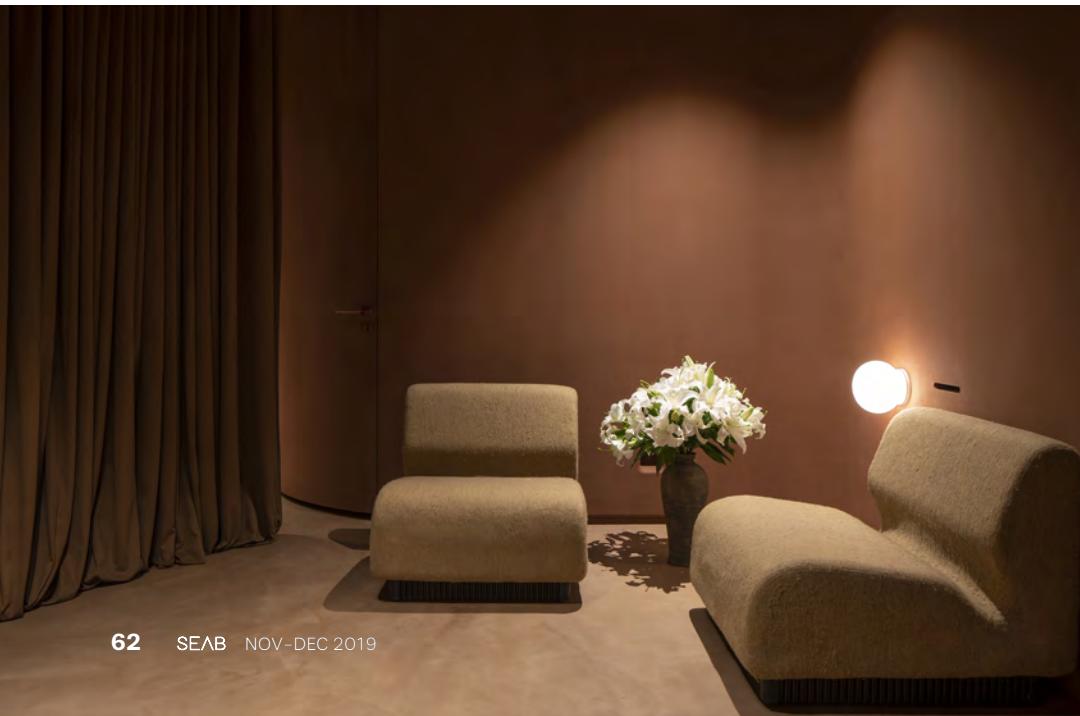
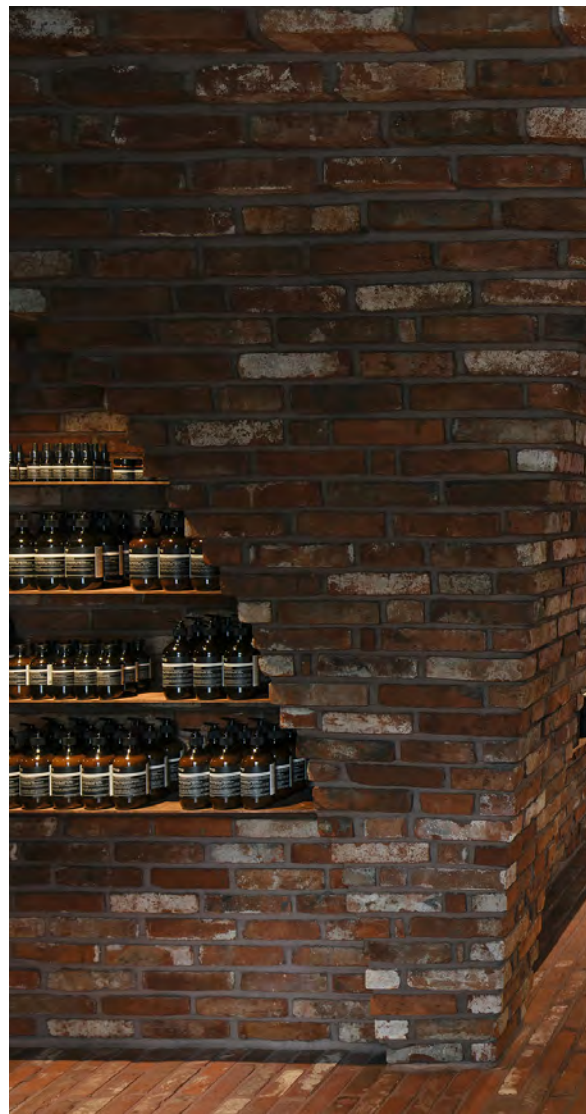
MLKK Studio provided a warm and cosy interior using reclaimed red brick and build in organic shapes to offset the cold weather in Seoul.



In the beginning, when the design team from MLKK Studio first discussed the project, the most frequent and recurring word raised is "coldness". The psychological and physical discomfort brought by the extreme weather in Seoul is a concern. Even in the less stiff spring and autumn, a warm and cosy space would be much desired. This set the tone and direction for the ambience of Hannam Sounds Signature Store. The project is a retail store on the ground floor and a facial treatment room on the first floor. The space is located in cosmopolitan Hannam, an eclectic neighbourhood of hilly streets and narrow alleys. The store occupies the ground floor of a newly built small development called Hannam Sounds. It has a dominating cold grey colour brick façade which wraps around the entire architecture. This gives an exciting opportunity to do something just the opposite, to provide a warm and cosy interior using reclaimed red brick and build in organic shapes to offset the static coldness. The choice of using different brick material creates a dialogue with the architecture and effortlessly blend the interior and the exterior, while also creating a visual contrast that draws pedestrian's attention along the street.

The interior space is designed in arched niches organic shape. On the one hand it creates a contrast to offset the rigidity of the orthogonal building facade design, and on the other hand, subtly referencing the traditional brick-made kiln in Mangdaengi Gama. It gives a psychological comfort and warmth when one is standing within the space. All the bricks are reclaimed, brought to the site and installed piece by piece in the hands of local artisans. These reclaimed red bricks add colour variety and enrich the sense of time and history of the space. Viewing from the street, the space is lit up like an ignited kiln.

The point of sales and demonstration sink are also made in brick, extending from the brick floor to form two commanding elements in the centre. Customers browse around the masses and the copper product shelving are set on the arched wall space. The project comprises of retail space on the ground level, a lounge, a treatment room and office space on the upper floor. An earthen textural painted stairwell leads customers to the upper floor. Upstairs is arranged in a way the lounge has good privacy in the centre but still with a view towards the exterior. Near the exterior window, there is a long bench where people can enjoy the sunshine, or go out to the terrace for refreshing air. These spaces could all be connected for special events. Inside the treatment room, there is a private bathroom and changing room for a high-quality treatment experience.





The most frequent and recurring word raised is “coldness”.

The psychological and physical discomfort brought by the extreme weather in Seoul is a concern. Even in the less stiff spring and autumn, a warm and cosy space would be much desired.

Design team at MLKK Studio



PROJECT DATA

Project Name: Sounds Hannam
 Aesop Signature Store
Location: 35 Daesagwan-ro
 Yongsan-gu, Seoul 04401, South
 Korea
Client: Aesop
Architect Firm: MLKK Studio
Size: 140 square metres
Completion: 2018
Photos: © Courtesy of Aesop

JHW Store

For the JHW Store in Zhengzhou, China, Atelier Tao+C boldly used washed granolithic plaster as the main material for interior walls and floors.

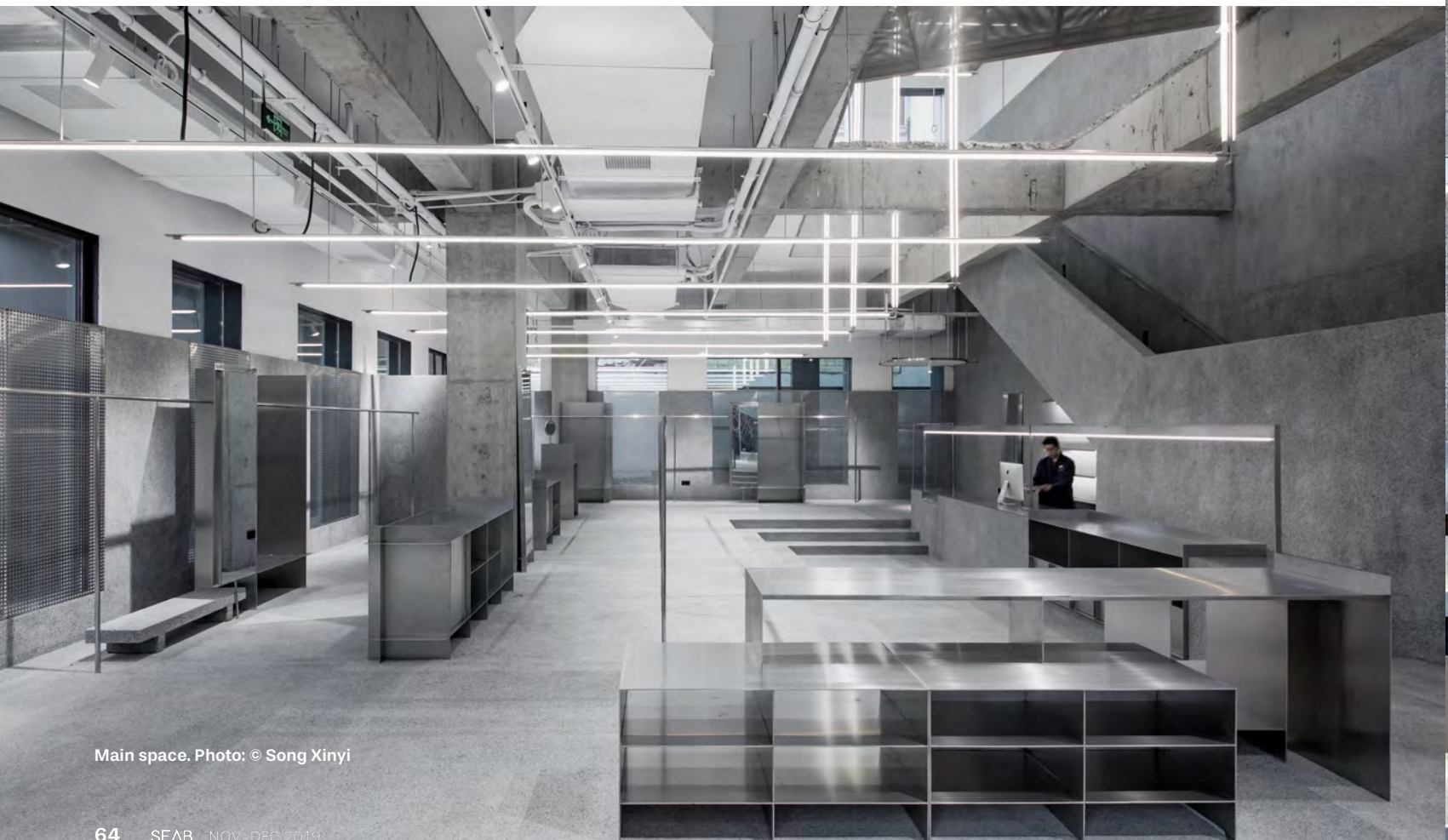
A greyscale palette of two materials – washed granolithic plaster juxtaposed with brushed stainless steel, one is rough and dull while the other is sterile and reflective, which formed an austere monochrome space for this two-storey menswear select shop.

In this project, Atelier Tao+C boldly applied washed granolithic plaster as the main material for interior walls and floors. The material has a different name – Shanghai plaster, which was favoured in 1920s Shanghai for the city's iconic Art Deco façades, later spreading to Hong Kong and Malaysia.

A material, which is mixed with granitic stones and cement to form a gentle and rough texture. Reusing this once popular yet forgotten material, the architects seek to evoke memories

of the most dynamic and creative era and city to convey a more "local" sense of the street. Responding to the owners' request to feature domestic street-style fashion brands in the store and promote local young designers. Located in a banal shopping mall in Zhengzhou, the architect puts a lightweight inner shell made of shanghai plaster and perforated stainless steel along the perimeter of existing building, enclosed a mysterious inner field. The sun shines through the perforated stainless steel, projected evocative oblong spots onto the fine-grained ground.

The centre of ground floor is recessed by three steps to create a sunken place in front of the reception desk, an area that can be utilised for designer talks and special events and



Main space. Photo: © Song Xinyi



Staircase. Photo: © Tian Fangfang



Upper floor stair and opening. Photo: © Tian Fangfang



“ Keeping away from the fashion retail design trends, which usually feature colourful bright look, the JHW store design rethinks what is appropriate for Chinese street-style. Using a forgotten outdoor material into interior, it formed an austere background for various clothes. The shanghai plaster has the same ingredients of trendy terrazzo but without polishing, contrast with stainless steel and exposed concrete, turns out a space feels timeless and looks like a historical relic.

Tao Liu (left) and Chunyan Cai, Co-Founders of Atelier Tao+C



Material and light. Photo: © Tian Fangfang

loosely divide the display area and the activity area. Above, the slab was cut away to form a soaring double-height space with the original beams were exposed and became a cross in the opening. A staircase surrounded by shanghai plaster passes through, the horizontal linear lightings hanging on the ceiling of the ground floor running up and vertically across the opening and visually connects two layers.

On both floors, there is respectively a glass box as the display and installation place. The one on ground floor breaks used for rotating window displays juts out of JHW's storefront. The glass corridor on the upper floor crossed over the opening.

All the display items and vitrines are assembled with 5mm-thick stainless steel plates. The metal plates intersected together and avoid the welding marks. The boxy body of vitrines contrasted with the slim lines of clothing railings, formed a complete and independent display system.



Facade of JHW Store in Zhengzhou. Photo: © Tian Fangfang

PROJECT DATA

Project Name: JHW Store
 Location: Zhengzhou, China
 Client: JHW
 Architect Firm: Atelier Tao+C
 Size: 405 square metres
 Completion: 2019

“The Build Build Build programme of the government is at the right trajectory and has made considerable impact as far as the economy is concerned.”

– An interview with Anna Mae Lamentillo, Chairperson of the Build Build Build Committee of the Department of Public Works and Highways (DPWH) in the Philippines



Photo courtesy of Anna Mae Lamentillo

Anna Mae Yu Lamentillo tells us more about the “Build, Build, Build” programme under the Duterte administration, its achievements and the future of the country's building and construction industry.

SEAB: I understand that the “Build, Build, Build” programme is part of the Duterte administration. Can you tell us more about this programme?

ANNA: The Build Build Build programme is the Duterte administration's medium-term goal to increase infrastructure spending from 5.4 percent of the country's Gross Domestic Product (GDP) in 2017, to 7.3 percent by the end of President Rodrigo Duterte's term in 2022. This is higher than the 2.4 percent average recorded by the past six administrations in the last five decades – and the highest budget allocation for infrastructure in Philippine history.

SEAB: How much budget has the Duterte administration allocated to this programme?

ANNA: Under the Duterte Administration, the Philippines will show off its biggest, boldest and most ambitious infrastructure programme so far. In 2017, the government budgeted around 5.4 percent of GDP for infrastructure development, which is more than twice the 2.5 percent average for the past six administrations.

The government will spend around 7 to 8 Trillion Php in infrastructure projects to usher in the Golden Age of Infrastructure in the Philippines.

Included in the Build Build Build programme is the Luzon Spine Expressway Network – a 1,040-kilometres expressway network which would connect the northern and southernmost part of Luzon. By building a total of 18 expressways with a total road length of 655 kilometres, the masterplan aims to compliment the existing expressway network spanning 385 kilometres. Once completed, the travel time from Metro Manila to San Fernando, La Union, will be reduced from six hours and 55 minutes to three hours and 10 minutes. Travel time from La Union to Bicol will be reduced from 19 hours and 40 minutes to eight hours and 15 minutes.

SEAB: When did the programme start and how did it get its catchy name “Build Build Build”?

ANNA: In 2012, the Philippines lost P2.4 billion a day. Six years after, a study conducted by Japan International

Cooperation Agency said the number had gone up to P3.5 billion a day due to traffic congestion in Metro Manila. Now, road usage in Metro Manila is at about 13.4 million trips per day and could go as high as 16.1 million in 17 years. Economic losses could also rise up to P5.4 billion in 2035 without any infrastructure interventions. Solving the traffic congestion and improving the connectivity in all the regions of the country is a priority of this administration.

The Build Build Build programme started when for the first time in Philippine History, six national agencies, namely the Department of Finance, the Department of Budget and Management, the National Economic and Development Authority, the Department of Public Works and Highways, the Department of Transportation, the Bases Conversion and Development Authority formed a cluster to work closely in attaining the Philippines' Golden Age of Infrastructure.

SEAB: What areas does the programme cover – infrastructure, building or construction?

ANNA: The Build Build Build covers roads, bridges, flood control projects, school buildings, evacuation centres, rail, seaports and land ports. We have also started building New Clark City, a 9,450-hectare smart, green, master planned metropolis built to address congestion in the metro and foster growth of regions outside Metro Manila.

SEAB: Can you briefly tell us the achievements or projects completed under this programme?

ANNA: Following are the projects completed under the programme.

Roads, Bridges and Flood Control Infrastructure

Since June 2016, Public Works and Highways Secretary Mark Villar noted that 9,845 kilometres of road, 2,709 bridges, 4,536 flood control projects, and 82 evacuation centres have already been completed.

Of the 9,845 kilometres of roads completed, 1,096 kilometres are farm-to-market roads, 589 kilometres are missing links, 418 kilometres are bypasses or diversion roads, 220 kilometres lead to airports and seaports, 175 kilometres lead to economic zones, and 961 kilometres lead to

declared tourism destinations. A total of 1,121 kilometres were maintained, 2,092.89 kilometres widened, and 1,361 kilometres rehabilitated and upgraded.

These includes the NLEX Harbor Link, the C5 Southlink (Phase 1), the Skyway Stage 3 (Phase 1), the Radial Road 10 in Manila, the Cagayan de Oro Coastal Road, the N Bacalso Underpass in Cebu, the Pulilan-Baliuag Diversion Road in Bulacan, and the Calapan-Roxas Road in Oriental Mindoro.

Of the 2,709 bridges, 462 were widened, 108 constructed, 1,642 strengthened, and 155 replaced. About 342 local bridges were also built.

These include the Anduyan Bridge in La Union, the Bolo-Bolo Bridge in Misamis Oriental, the Caguray Bridge in Occidental Mindoro, the Pasac-Culcul in Pampanga, the Maddiangat Bridge in Nueva Viscaya, and the Pigalo Bridge in Isabela.

71,803 classrooms

Through a convergence programme with the Department of Education, a total of 71,803 classrooms were constructed in various schools nationwide, benefiting more than 3.2 million learners, while 67,608 classrooms are in various stages of implementation. These accomplishments have eased the classroom congestion, from a ratio of 1 classroom to 35 learners in 2016 to 1 classroom to 28 learners in 2018.

Rail, Airports, Commercial and Tourism Ports

Under the Duterte administration's "Build, Build, Build" programme, Transportation Secretary Art Tugade noted that a total of 65 airport projects, one land port, and 220 commercial and social tourism port projects have been completed.

This includes the new Bohol-Panglao International Airport, the Philippines first eco airport, the Passenger Terminal Building of the Mactan-Cebu International Airport, and the Paranaque Integrated Terminal Exchange.

For decades, the Philippines has functioned on a total of 77 kilometres of operational railways. Now, the government envisions to expand the country's rail network to 1,900 kilometres to benefit around 4.5 million passengers daily. To date, 6 railway projects are ongoing, while 6 more are due for construction.

Moreover, a total of six projects are being constructed, namely, the PNR Clark Phase 1, LRT-1 Cavite Extension, the Common Station, the Metro Manila Subway project, the MRT-7 and the LRT-2 East Extension.

Other railway projects in the pipeline include the PNR Clark Phase 2, PNR Calamba, PNR Bicol, Mindanao Railway, LRT-2 West Extension, and the Subic-Clark Railway.

The Metro Manila Subway, the first ever underground railway system, broke ground last February 27, 2019. The 36-kilometre subway will run from Quezon City to NAIA Terminal 3 and FTI in Taguig. It is set to commence partial operations by 2022 for its first three stations, while the entire rail line will be fully operational by 2025. Once completed, travel time will be reduced to just 36 minutes.

New Clark City

In 2018, Bases Conversion and Development Authority (BCDA) launched New Clark City, a 9,450-hectare smart, green, master planned metropolis built to address congestion in the metro and foster growth of regions outside Metro Manila.

According to BCDA President Vince Dizon, Phase 1A of the National Government Administrative Center in New Clark City is now 98 percent complete.

This project involves a 40-hectare area dedicated for back-up offices of government agencies to provide continuous service by the National Government in times of disaster. It also features world-class sports facilities to be used during the Philippines' hosting of the 30th South East Asian (SEA) Games. It is envisioned to serve as the national training center for Philippine athletes. The centerpiece of the area is the 1.4-kilometre River Park Corridor which provides protection of the metropolis from flood.

Moreover, the construction of Terminal 2 of the Clark International Airport, the first hybrid Public Private Partnership to be implemented under the Duterte Administration is also at 78.77 percent.

SEAB: What kind of future do you see for the building and construction industry in the Philippines in the next 3 years?

ANNA: The government has been hard at work in improving the lives of Filipinos. In the next three years, we expect to change the way transportation is done in the Philippines. By 2022, every city in Metro Manila will only be within a 20 to 30 minute time frame. (Please find piece I wrote for Esquire Magazine: <https://www.esquiremag.ph/money/industry/build-build-build-metro-manila-20-minutes-travel-a2312-20190403>)

The Build Build Build programme of the government is at the right trajectory and has

“According to the latest report by Oxford Business Group (OBG), the Philippine economy is on track to surpass recent highs, making it the most likely to become the next “tiger economy” among ASEAN countries. The IMF's forecast of a 7-8 percent GDP growth is indeed attainable over the medium term.”

– Anna Mae Lamentillo

made considerable impact as far as the economy is concerned.

In a report entitled “Philippines Tiger Economy Still Set for Dynamic Growth,” IHS Markit Asia-Pacific chief economist Rajiv Biswas predicts that in 2022, the Philippine will reach the upper middle-income status as robust economic growth trickles down to household incomes. It noted that the Philippine economy is poised to double by 2026.

If the Philippines is able to maintain its projected GDP Growth of 6.5 percent in the next decade, then the tiger cub economy might well be part of the trillion-dollar club, which currently includes United States, China, India, Japan, Germany, Russia, Indonesia, Brazil, United Kingdom, France, Mexico, Italy, Turkey, Korea, Spain, Saudi Arabia, and Canada.

According to the Philippine Statistics Authority, headline inflation rate at the national level continues to slow down at 1.7 percent in August 2019. This is even below the government target.

Moreover, the employment rate in July 2019 is estimated at 94.6 percent. The unemployment rate in July 2019 is at 5.4 percent. This is a huge improvement when compared to the unemployment rate during period of 2000 to 2005 of about 10.7 percent.

Poverty incidence in the first half of 2018 has significantly dropped by 6.1 percent as compared to the same period in 2015.

According to the latest report by Oxford Business Group (OBG), the Philippine economy is on track to surpass recent highs, making it the most likely to become the next “tiger economy” among ASEAN countries. The IMF's forecast of a 7-8 percent GDP growth is indeed attainable over the medium term.

Chongqing Gaoke Group Ltd Office Project

Chongqing, China

Aedas-designed Chongqing Gaoke Group Ltd Office Project stands at the north of Xingfu Plaza, Jiangbei District of Chongqing. As the construction progresses, the project has started to reveal its grand gesture in the city center. The vertical façade expression interweave with linear curves, to compose a fluid visual rhythm of the design. This project is expected to be completed in 2022, positioning itself as one of the "Most Twisting Towers in the world".

The surrounding environment has already been developed, and one big challenge for the designer is to interpret planning concept of "solar", into an iconic landmark well-integrated in the existing community context.

"As an open public space, the tower has all the credits to be a city icon. The significant twisting of the facade will catch everyone's eyeballs." Inspired by the dancing aurora, Global Design Principal Ken Wai and his team, has introduced an impressive façade design through bottom-to-top connections between northern and eastern sides. The 'ballet of light' is characterised by the juxtaposition of rectilinear forms and tower facades with double curves. Such curvaceous façade expression offers ever-changing perspectives around the development. When the sun rises, the curved facade shines, and the tower becomes the building of light. When night falls, the curved facade showcases reflections that allude to the dancing figure of a ballerina. The podium roof extends a coherent statement of sliding twist from top to bottom, echoing with the geometry of the tower and maintaining a consistent architectural style.



Photo: © Aedas



Photo: © Aedas



Photo: © Aedas

The magnificent twisting sculpts an impressive torsional shape for the tower. The maximum twisting angle is up to 8.8 degrees per floor, noticeably surpassing existing super high-rise tower in the world by nearly 1.5 times (CTBUH Journal, 2016 Issue 3). After completion, it is expected to be one of "The Most Twisting Towers in the world". Innovative façade technology from RFR empowers precise execution of such challenging design.

The unique twisting results in a high double-curvature ratio, which poses a major challenge for the overall façade system. Ken Wai and RFR joint hands to leverage on the cold bend glass technique and BIM on complex geometry façade for a magic solution. Such innovation is to adapt to the changing geometric parameters and dimensions, while fulfilling requirements on safety, waterproof and thermal performance. It also ensures a consistent façade construction in line with BIM simulations. The system of cold bend glass on 3D frame façade component enables a maximum of 86mm in glass deviation, realising a record-breaking design in China. From overall geometry analysis, façade component modeling & clash-checking, LOD400 detail component modeling, automotive data exporting and auditing, 3D BIM has been utilised throughout the façade design process.

"The façade is not only an outlook expression, but also a way of protection that sculpts interior spaces," explained Ken. His delicate design has been articulated for the top of the tower, by conveying the conceptual "Valley of Light" through the transparent glass façade and lightings, to make a coherent statement. Such concept differentiates the crown of this tower from other office spaces. The plant room, BMU and other facilities are centralize inside the "Valley" on the top of the building, achieving functional unity without undermining the visual aesthetics.

As for the master layout, Ken has put thorough consideration to the surrounding environment and the building volume. The tower is located of the left side of the mall, minimizing the towering effect on the adjacent parts of the development, and establishing interactive connections in between. The tower sets back northwards, to connect podium and the mall at the south. A variety of public space for civic leisure has thus been created. The underpass to its west leads easy access to the existing shopping centre, as a sensible approach to improve commercial value of underground space.

Chambre de Métiers et de l'Artisanat (CMA) Hauts-De-France

Lille, France

Following the launch of its Paris outpost, Dutch architecture firm KAAAN Architecten together with French office PRANLAS-DESCOURS architect & associates (PDAA), present the new Chambre de Métiers et de l'Artisanat (CMA) Hauts-De-France in Lille (France). The winning entry of an international competition for Eurartisanat campus, this building works as a new gateway of the city and is part of

its urban development initiated in the Eighties with Euraille district, Euratechnologies and Eurasanté.

The CMA is set along the edge of the former Seventeenth Century Vauban fortification, now replaced by a high-speed ring road. The northern border of the site is defined by a railway line and the botanical garden – Jardin des Plantes de Lille. To the south, Rue Abélard defines the perimeter of a wider



Photo: © Fernando Guerra FG+SG



Photo: © Fernando Guerra FG+SG

masterplan area designed by KAAAN Architecten and PDAA, and comprising of CMA headquarters, a future complex of five buildings and a lush park spanning the site as an extension of the nearby garden.

With its minimalist esthetics and elegant transparency, the monolithic building gives an embracing and protective gesture towards the surrounding nature, reinforcing the dialogue between the diverse elements of the area.

In broad horizontal strokes, the CMA spreads over three floors rising from a square shaped footprint of 80 by 80 metres, providing both educational functions and spaces dedicated

to supporting craft business.

Each floor holds a strong connection to the green landscape: on the first floor, KAAAN Architecten and PDAA have designed a prominent cantilever that frames a scenic view of Lille and the gardens.

The building features two public squares on different levels. On the ground floor, is the new Place des Artisans (south), while a large terrace to the north of the first floor aligns the project with Rue du Faubourg d'Arras and connects to it with a bridge. Both public entrances are linked by an enfilade of representative spaces: southern square, entrance hall, the



Photo: © Fernando Guerra FG+SG

auditorium and its foyer, as well as a wide opening overlooking the north terrace. Moreover, each entrance serves the two main architectural realms: the apprentice training centre and offices devoted to supporting craft business procedures.

The CMA is symmetrically organized around six patios that provide natural light for most circulation spaces and divide the building into four clusters housing different realms and spanning through the whole three levels. Functions vary from local and regional administration to research and educational facilities (hairdressing school, cooking school, laboratories, classrooms). The new building acts as a hub for both the *Chambre* and the associated training schools, which had been previously scattered throughout the historic city centre of Lille.

In order to interact with the urban fabric and the surrounding landscape, the architects have paid great attention to the use of natural materials: glass and stone. The ground and

second floors are wrapped by a modular double glass facade that ensure climate control and quality acoustics. Spanning the full floor height, each module features an inner polished aluminum window which can be opened and a fixed outer glass panel with a reflective print that gradually fuses to create a fully transparent zone at eye level while blending the building into nature.

Moreover, the patio façades which feature large polished aluminum window frames are clad in *Vals Quartzite*, a very solid, compact and frost-resistant stone from Switzerland. The same stone has been used on the patio floors as well as in the entrance hall to enliven the link between exterior and interior.

Through its solid materiality, *Eurartisanat* aims to both articulate, absorb and reflect the surrounding landscape while at the same time standing out as a new iconic element, an inhabited landscape dedicated to the public sphere.



Photo: © Fernando Guerra FG+SG



Photo: © Ronald Tilleman

The Edge

The Zuidas, Amsterdam, The Netherlands

In 2009 PLP Achitecture was invited to design The Edge, Deloitte's new offices in Zuidas, Amsterdam's business centre. The ambition of the project was two-fold: to consolidate Deloitte's employees, previously spread around multiple buildings throughout the city, within a single environment; and to create a 'smart building', intended as a catalyst for Deloitte's transition into the digital age.

PLP's design for the building, which won first prize in the competition, addressed these conditions directly. What is the role of architecture when the workplace is permeated by layers of technology that fundamentally alter the way that we interact with our environment? How can design augment these virtual frameworks to create places that encourage spontaneous sociability? PLP proposed a building that creates a symbolic display out of the informal collaboration spaces and the multitude of different working atmospheres demanded by new patterns

of working – flexible and social, physically and virtually interconnected.

PLP's starting point was the design of a social condenser – a nucleus for the building. Taking the form of an atrium interspersed with bridges and exposed lift cores, which act as nodes of horizontal and vertical activity; this nucleus collates a series of social environments in order to galvanize a specific internal working culture. The atrium acts as a giant theatrical device: a stage that is visible from the surrounding offices which are arrayed as an amphitheatre around it as well as a lens that broadcasts the multiplicity of social encounters as a civic spectacle to the city beyond.

The scale of the space, and the atmospheres created by a subtle differentiation in materials and lighting, make the atrium a natural gathering place. It is lofty but calm, filled with steady north light which filters in through the low-e glass of the atrium façade. As a continuous surface, this façade



Photo: © Ronald Tilleman



Photo: © Ronald Tilleman



Photo: © Ronald Tilleman

folds into the roof to animate the building, not only acting as a window that unveils its daily activities to the outside but also framing the varying surroundings to the inside.

In The Edge, employees no longer have assigned desks. This allows them to work anywhere in the building in varying levels of introspection or sociability: there are work-booths, focus rooms, concentration rooms, sitting desks, standing desks, balcony desks, along with the many work-stations within the sun-filled atrium itself. The building adapts to the users' preferences for lighting and heating via a mobile app, which also allows users to locate their colleagues and find free desks. The combination of app and architecture supports activity-based working: employees actively choose the environment, mood and atmosphere they want to work in for different tasks throughout the day.

While sustainability as a purely technological narrative has been exhausted by its overuse, The Edge creates a radically new working environment which is enabled by sustainable technologies. With the world's highest rating awarded to an office building by the Building Research Establishment (BRE), the global assessor of sustainable buildings, The Edge combines numerous smart technologies in tandem to create an adaptable and intelligent working environment.

Awards won by The Edge include:

- 2015 AIA Continental Europe Award – Environmental Design Category – Winner
- 2015 Blueprint Awards – Best Sustainable Design Category – Shortlisted
- 2015 Leaf Awards – 'Developer of the Year' Category – Shortlisted
- 2015 WAN Sustainable Building Awards – Shortlisted

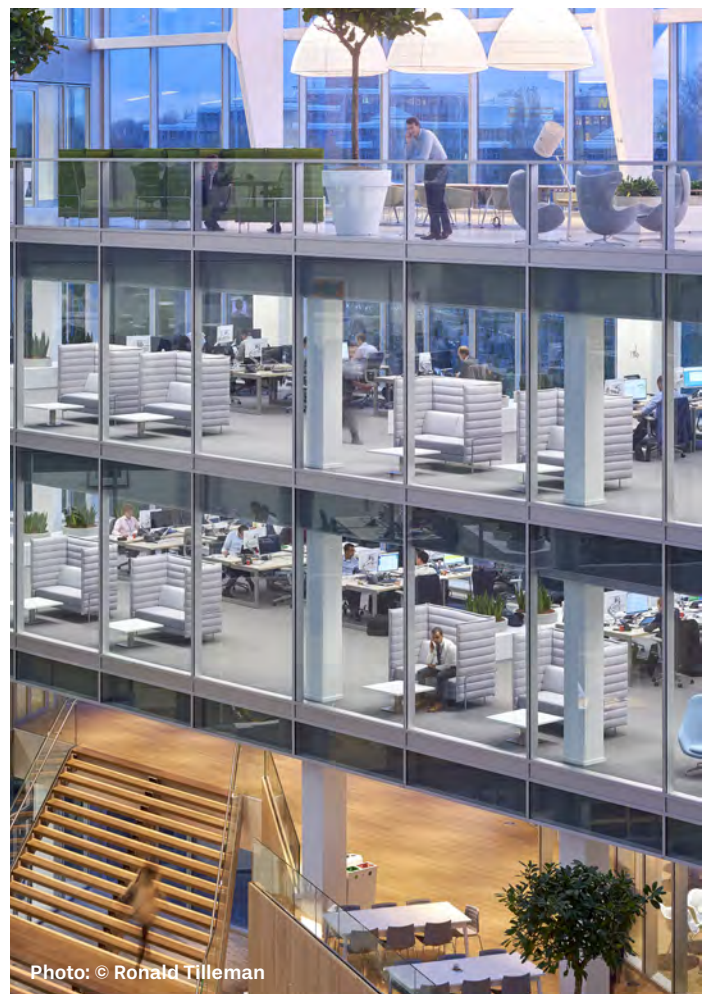


Photo: © Ronald Tilleman

Chilled water system in hospitals

Text and photos by Danfoss

Chilled water system is operated to fulfill the large cooling demand of hospital facilities. The emergency treatment centres, surgical rooms, intensive care units are among the critical areas, which cooling energy need to be supplied all the time.

The operating chillers and pumps are directly powered by electrical energy. This is supplied by the step-down transformer from the power grid.

In an event of power failure, the emergency electrical energy will be switched to diesel generator (gen-set) to power up the chillers and pumps. However, as the gen-set has limited energy-generation capacity, thus the non-critical cooling load will be shut down. This means chilled water should be supplied only to the critical areas in order to conserve power. In order to achieve this, some adjustments need to be made to the existing chilled water system.

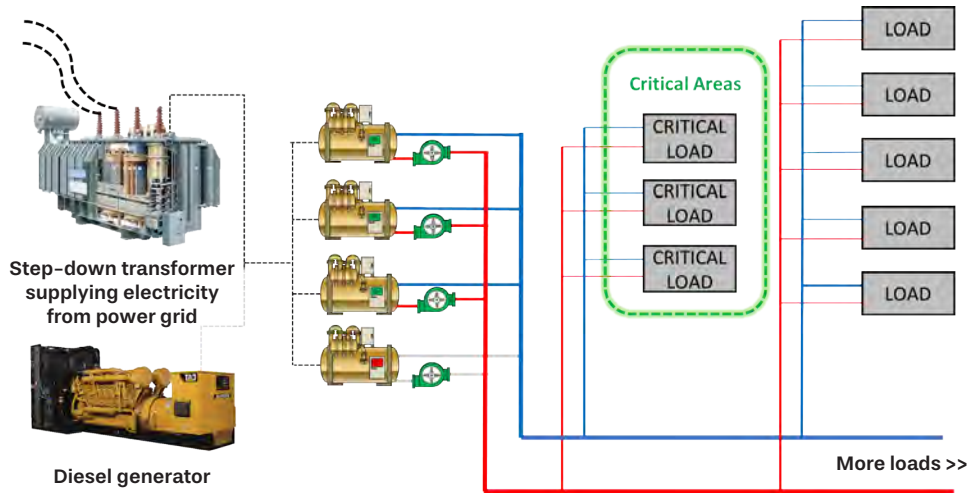


Figure 1: Existing chilled water system in hospital

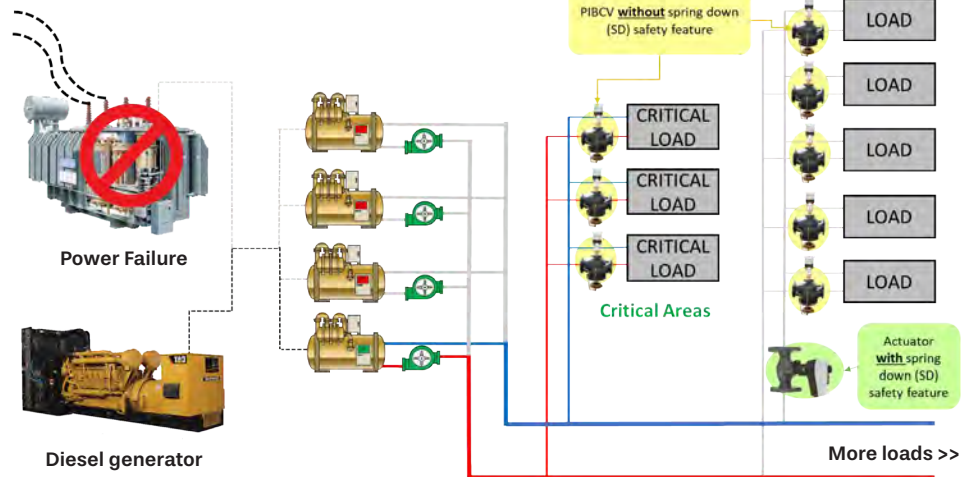
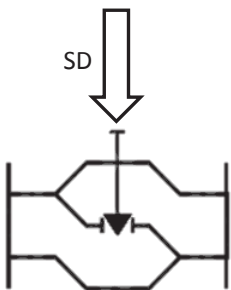
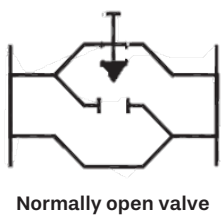


Figure 2: Option 1

Option 1: Install spring down (SD) actuators on normally open (NO) valves at branch pipes

Spring down actuators should be installed to valves located at the branch pipes leading to non-critical areas including hospital corridors, offices, canteen, etc.

During power failure, the spring down (SD) actuators will fully close its valve opening through mechanical spring action. As it closes, it hinders chilled water from flowing to less critical loads and directly isolates those areas.

This alternative will require additional 2-way valves at each branch pipes. But, the PIBCVs at each terminal unit does not need to be equipped with spring down safety function.

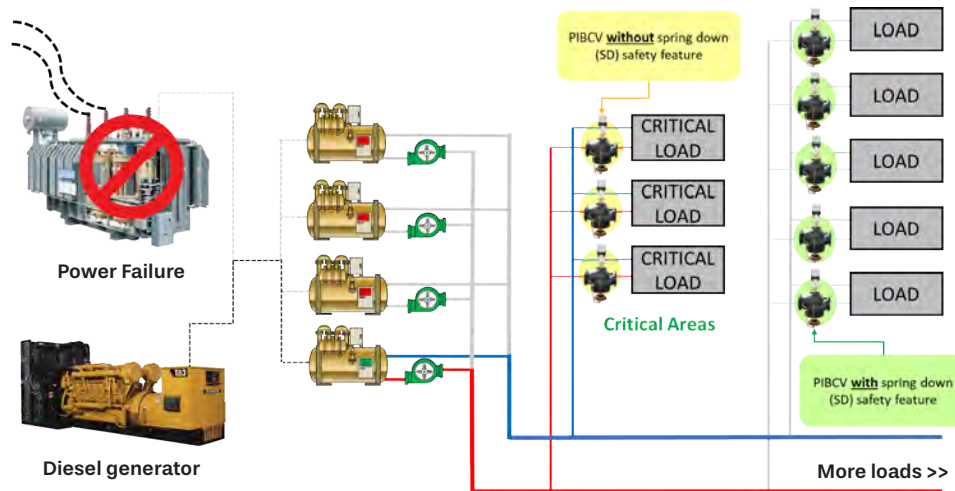


Figure 3: Option 2

Option 2: Install Pressure Independent Balancing and Control Valve (PIBCV) at terminal units with spring down actuators

PIBCVs without spring down function should be installed at critical areas whereas PIBCVs with spring down function should be installed at less critical regions.

During power failure, spring down actuators of PIBCVs at less critical areas will fully close its valve opening. This isolates individual terminal units at less critical areas, thus stop chilled water from distributing to less critical areas.

This alternative saves on installing 2-way control valves at each branch pipes but all the PIBCVs at less critical load need to be equipped with spring down actuators.



Danfoss Spring Return actuator

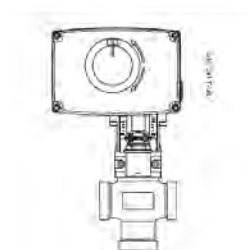
AME 25 SD or AME 25 SU electric actuators are used with VRB, VRG, VL, VF, VFS 2 and VEFS 2 valves up to DN 50 diameter. The actuator automatically adapts its stroke to valve end positions, which reduces commissioning time.

Main data:

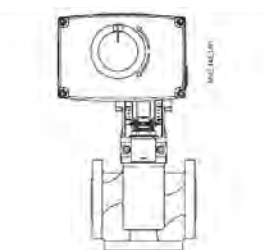
- The advanced design incorporates load related 'switch-off' to ensure that actuators and valves are not exposed to overload.
- The advanced design incorporates a diagnostic LED, operational data capture and self stroking feature.
- Low weight and robust.
- Spring return versions:
 - SD - spring down or
 - SU - spring up.



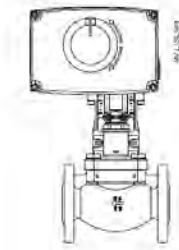
Actuator – valve combinations



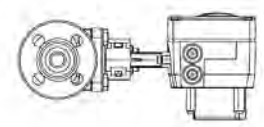
AME 25 SD/SU + VRB 3, VRG 3 (DN 15 - 50)



AME 25 SD/SU + VFS 2 (DN 15 - 50)
VL 2-3 / VF 2-3 (DN 15 - 50)



AME 25 SD/SU + VFS 2 (DN 15 - 50)
VEFS 2 (DN 15 - 50)



AME 25 SD/SU + VEFS 2 (DN 25-50) - 200C

BuildTech Asia 2020

International Building & Technology Expo

The Future of Construction -
INTEGRATED, COLLABORATIVE, PREDICTIVE & SMART!

11-13 March 2020
Singapore Expo

www.buildtechasia.com



20,000 sqm
Exhibition Space

300+ International
& Regional Brands



10,000+
Visitors

70% Senior Management



Business Matching
for qualified leads

Trade Mission & Group Delegation



Up to 50% Subsidy!
iMAP approved. Ts&Cs apply



Co-located Industry Conferences &
DIGITAL Architecture Asia trade show



BuildTech Asia

the Built Environment one-stop industry event!

BOOK YOUR PREMIUM SPACE NOW!

Please contact: **Ms Mary Jane**

T: +65 6319 4035 / E: mjaneb@sph.com.sg
E: buildtechasia@sph.com.sg / [buildtechforasia](https://www.facebook.com/buildtechforasia)

STAY TUNE:

BuildTech Asia

INDONESIA 2020

International Building & Technology Expo

**Enhancing Construction
Productivity Through
Digital Transformation**

14-16 July 2020 / Jakarta Indonesia

ORGANISED BY:



A SUBSIDIARY OF sph



Niagara 4 opens up new opportunities to achieve operational excellence

With nearly half a million instances worldwide, Tridium's Niagara Framework is quickly becoming the operating system of the Internet of Things. Its open API, open distribution business model and open protocol support give you the freedom to choose how you work, what you build and with whom you partner. Niagara enables you to connect and control devices, while normalising, visualising and analysing data from nearly anywhere or anything.

From buildings and data centres to manufacturing systems and smart cities, the Niagara Framework improves strategic decision-making, allowing for optimized performance and cost reductions that can help businesses be more competitive and more profitable. And with the release of Niagara 4 and the JACE® 8000 controller, the opportunity to achieve operational excellence is even greater than before.

Niagara 4 – Open for performance

Niagara 4 builds on the legacy of the Niagara Framework® in new and exciting ways. It is less reliant on browser plug-ins, faster and easier to use. Now end users can directly access, analyse and act on a wide range of operational data. A truly open framework, Niagara 4 delivers a variety of notable improvements to help businesses take full advantage of the Internet of Things, including advanced visualisation and new search, security and navigation tools.

Niagara 4 – Key features

- Modern UX framework and design language (HTML5)
- End users are able to easily customise dashboards
- Advanced charting and visualisation
- Data tagging
- Tag-based navigation
- Device templating
- Data cleansing capabilities
- Niagara station search
- Workbench workflow improvements



- Role-Based Access Control (RBAC)
- Pluggable authentication schemes
- Improved UI developer experience (BajaScript 2.0)
- Station templating
- Niagara AX to Niagara 4 station migration tool

JACE 8000 controller – A modular approach for global design

Optimised for Niagara 4, Tridium has created an all-new hardware platform: the JACE 8000 controller. This "next-generation" controller features a new global design that functions with legacy systems and has the ability to scale for future needs.

JACE 8000 controller – Key features

- Powerful Niagara 4 hardware platform with easy software upgrade capability
- Modular hardware design for fast and easy installation
- Tool-less installation
- Expandable with up to four option modules



- Native Wi-Fi capability
- 24VAC/DC – standard global power supply
- Standard open drivers included
- Easy to select the right capacity license
- Intuitive user interface
- Rich choice of different colors, materials and finishes for differentiated OEM brand identification

Tridium's native Niagara Fox protocol will work between the Niagara AX and Niagara 4 software systems, and the Niagara 4 software will work with any currently available JACE hardware.



futurebuild
southeast asia



**HEAVY
MACH**

23 - 25 JUNE 2020

**MALAYSIA INTERNATIONAL TRADE
AND EXHIBITION CENTRE (MITEC)**



www.ecobuildsea.com
www.super8asean.com



JOIN US AGAIN NEXT MARCH
SYDNEY BUILD IS MOVING TO THE ICC

HOW STRONG IS YOUR BRAND?
WTR
TRANSOM

REGISTER TO ATTEND FOR FREE
www.sydneybuildexpo.com



19 - 20 MARCH
ICC SYDNEY



ATTEND AUSTRALIA'S LEADING CONSTRUCTION, ARCHITECTURE & INFRASTRUCTURE EXHIBITION

EVENT FEATURES

350+ EXHIBITORS | **25,000+ REGISTERED ATTENDEES** | **300+ TOP LEVEL SPEAKERS**

20 SUMMITS ACROSS 8 STAGES:

- CONTRACTORS & SUBCONTRACTORS SUMMIT
- DIGITAL TRANSFORMATION SUMMIT
- SUSTAINABILITY SUMMIT
- WOMEN IN CONSTRUCTION SUMMIT
- HVAC & FACILITIES MANAGEMENT SUMMIT
- PROPERTY MANAGEMENT SUMMIT
- GOVERNMENT POLICY SUMMIT
- SYDNEY METRO & RAIL SUMMIT
- ARCHITECTURE & DESIGN SUMMIT
- DISRUPTIVE TECHNOLOGY SUMMIT
- MODULAR & PREFAB SUMMIT
- CONSTRUCTION OUTLOOK SUMMIT
- NON CONFORMANCE & DEFECTS SUMMIT
- RECONCILIATION SUMMIT
- FIRE SAFETY SUMMIT
- SYDNEY ROADS, TRANSPORT & TRAFFIC SUMMIT
- BUILDING INFORMATION MODELING SUMMIT
- NEW INFRASTRUCTURE SUMMIT
- ASSET MANAGEMENT SUMMIT
- THE ENGINEERS SUMMIT

INTERESTED IN EXHIBITING? GET IN TOUCH WITH OUR TEAM:
enquiries@sydneybuildexpo.com | 02 8006 7557 | www.sydneybuildexpo.com

SINCE 1995

**FIRST TRADE EXPO FOR WINDOW DOOR
AND FACADE PRODUCTS IN CHINA**



EXHIBITORS

634



SQUARE METERS
EXHIBITION SPACE

100,000+



PROFESSIONAL
BUYERS

65,468



VISITS

132,935

APPROVED BY



ALUMINIUM WINDOW, DOOR AND CURTAIN WALL COMMITTEE
OF CHINA CONSTRUCTION METAL STRUCTURE ASSOCIATION

SUPPORTED BY



CHINA REAL ESTATE
INDUSTRY ASSOCIATION

ORGANIZED BY

城+博展览 伙伴天下

citiexpo

being your partner +

informamarkets

WORLDBEX SERVICES INTERNATIONAL

THE 25th PHILIPPINE WORLD BUILDING AND CONSTRUCTION EXPOSITION



WORLD**BEX**



A LEGACY BUILT

MARCH 18-22 2020



worldbex.com



Total Area
182,000 m²

Exhibitors
2,000+

Featured Events
50+

CHINA XIAMEN INTERNATIONAL STONE FAIR

MARCH 16-19, 2020
XIAMEN, CHINA

+86-592-5959616 info@stonefair.org.cn www.stonefair.org.cn

GET UPDATED ON





Subscription Form

Fax your order today
+65 6842 2581

(Please tick in the boxes)

Southeast Asia Building

SINCE 1974

1 year (6 issues)

Singapore	S\$45.00
Malaysia / Brunei	S\$90.00
Asia	S\$140.00
America, Europe	S\$170.00
Japan, Australia, New Zealand	S\$170.00
Middle East	S\$170.00

Bathroom + Kitchen Today

SINCE 2001

1 year (4 issues)

Singapore	S\$32.00
Malaysia / Brunei	S\$65.00
Asia	S\$80.00
America, Europe	S\$130.00
Japan, Australia, New Zealand	S\$130.00
Middle East	S\$130.00

Southeast Asia Construction

SINCE 1994

1 year (6 issues)

Singapore	S\$45.00
Malaysia / Brunei	S\$90.00
Asia	S\$140.00
America, Europe	S\$170.00
Japan, Australia, New Zealand	S\$170.00
Middle East	S\$170.00

Lighting Today

SINCE 2002

1 year (4 issues)

Singapore	S\$32.00
Malaysia / Brunei	S\$65.00
Asia	S\$80.00
America, Europe	S\$130.00
Japan, Australia, New Zealand	S\$130.00
Middle East	S\$130.00

Security Solutions Today

SINCE 1992

1 year (6 issues)

Singapore	S\$45.00
Malaysia / Brunei	S\$90.00
Asia	S\$140.00
America, Europe	S\$170.00
Japan, Australia, New Zealand	S\$170.00
Middle East	S\$170.00

IMPORTANT

Please commence my subscription in _____ (month/year)

Personal Particulars

NAME: _____

POSITION: _____

COMPANY: _____

ADDRESS: _____

TEL: _____ FAX: _____

E-MAIL: _____

Professionals (choose one):

- Architect
 Landscape Architect
 Interior Designer
 Developer/Owner
 Property Manager
 Manufacturer/Supplier
 Engineer
 Others

I am sending a cheque/bank draft payable to:
Trade Link Media Pte Ltd, 101 Lorong 23, Geylang, #06-04, Prosper House, Singapore 388399
 RCB Registration no: 199204277K * GST inclusive (GST Reg. No: M2-0108708-2)

Please charge my credit card (circle one): Amex / Diner's Club

Card Number: _____ Expiry Date: _____

Name of Card Holder: _____ Signature: _____

PLATINUM PARTNERS
SEAB

dormakaba Singapore	📍 Singapore	☎ +65 6268 7633	✉ helen.tan@dormakaba.com	🌐 www.dormakaba.com.sg	📖 OBC
Hunter Douglas	📍 Malaysia	☎ +603 5191 2020	✉ luxalon@hunterdouglas.com.my	🌐 www.hunterdouglas.com.my	📖 1
Mapei Far East	📍 Singapore	☎ +65 6862 3488	✉ mapei@mapei.com.sg	🌐 www.mapei.com.sg	📖 13

GOLD PARTNERS
SEAB

GRUNDFOS Pumps (Philippines) Inc.	📍 Philippines	☎ +63 2 465 3000	✉ inquires-ph@grundfos.com	🌐 ph.grundfos.com	📖 9
Schüco Singapore	📍 Singapore	☎ +65 6681 7480	✉ sea@schueco.com	🌐 www.schueco.com	📖 IFC
Tridium Asia Pacific	📍 Singapore	☎ +65 6580 3200	✉ tsupportap@tridium.com	🌐 www.tridium.com	📖 5

SILVER PARTNERS
SEAB

B Meters Srl	📍 Italy	☎ +39 0432 931415	✉ info@bmetrics.com	🌐 www.bmetrics.com	📖 11
LafargeHolcim	📍 Switzerland	☎ +41 58 858 82 92	✉ info@lafargeholcim-foundation.org	🌐 www.lafargeholcim-awards.org	📖 7
TSI Instruments Singapore Pte Ltd	📍 Singapore	☎ +65 6595 6388	✉ AP_Marketing@tsi.com	🌐 www.tsi.com	📖 3

See us at following upcoming events!

Event	Date	City	Country	Website	Page
World of Concrete 2020	4 - 7 Feb 2020	Las Vegas, Nevada	USA	www.worldofconcrete.com	IBC
R+T Asia 2020	24 - 26 Feb 2020	Shanghai	China	www.rtasia.org	15
Windoor Expo China 2020	5 - 7 Mar 2020	Guangzhou	China	www.windoorexpo.com/en/default.aspx	88
BuildTech Asia 2020	11 - 13 Mar 2020	Singapore	Singapore	www.buildtechasia.com	84
Xiamen International Stone Fair 2020	16 - 19 Mar 2020	Xiamen	China	www.stonefair.org.cn	90
WORLDBEX 2020	18 - 22 Mar 2020	Manila	Philippines	www.worldbex.com	89
Sydney Build 2020	19 - 20 Mar 2020	Sydney	Australia	www.sydneybuildexpo.com	87
Futurebuild Southeast Asia (SEA) Expo	23 - 25 Jun 2020	Kuala Lumpur	Malaysia	www.ecobuildsea.com	86

THE FIRST

AND

LAST

WORD

IN CONCRETE

WE DON'T JUST DABBLE IN CONCRETE AND MASONRY. We're the authority on it.

That's why each year, WOC is the first and only annual international event to bring you all the new products & equipment, training and technology to get the job done faster and more profitably than ever before. Join us, and in just five days you'll find everything you need to conquer the year ahead.

REGISTER TODAY worldofconcrete.com



FEBRUARY 4-7, 2020

EDUCATION: FEBRUARY 3-7

LAS VEGAS CONVENTION CENTER
LAS VEGAS, NV, USA



*A selected participant in the Trade
Events Partnership Program*



dormakaba for Offices.

Security for successful work with smart access solutions.



The door is open to new goals.

Every company has to think of tomorrow. What kind of working environment is required? How do ideas and knowledge come to light? How to protect know-how without compromising on openness. The architecture sets the tone here: with flexible room concepts, barrier-free access and secured entrances. These all need to be aligned- with reliable access solutions, combined with comprehensive planning services.

dormakaba offices in ASEAN:

Singapore	Tel : +65 6268 7633
Malaysia / Brunei	Tel : +603 8081 8009
Philippines	Tel : +63 2 893 4077
Indonesia	Tel : +62 21 2930 3762
Vietnam	Tel : +84 903 823111
Thailand/Cambodia/ Myanmar/Laos	Tel : +66 2059 2612

www.dormakaba.com.sg

dormakaba 